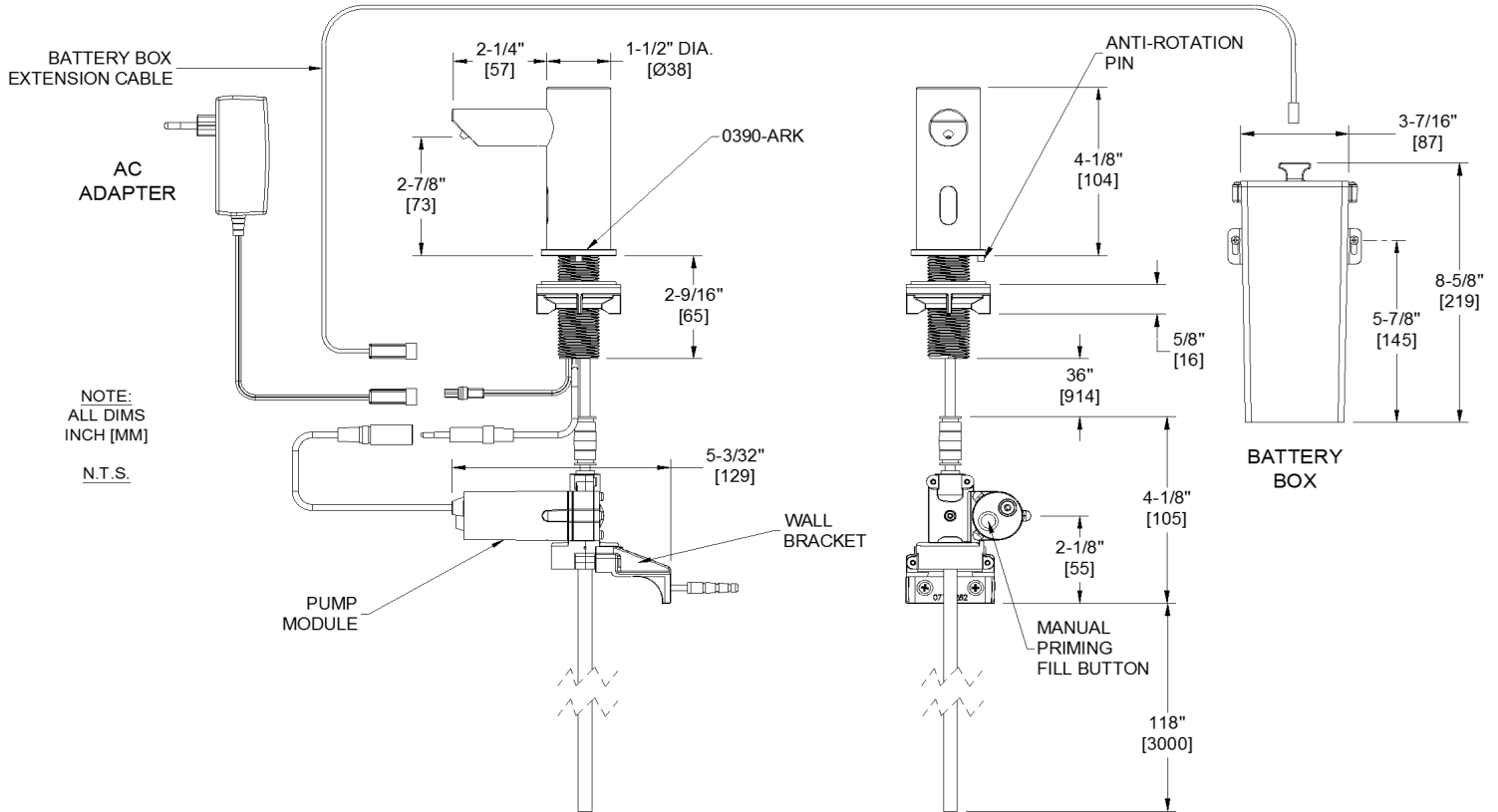




**AMERICAN SPECIALTIES, INC.**  
 441 Saw Mill River Road, Yonkers, NY 10701  
 (914) 476.9000 • (914) 476.0688  
 www.americanspecialties.com

<b>MODEL №:</b>	<b>0390-(n)</b>
<b>ISSUED:</b>	01/14
<b>REVISED:</b>	12 JAN 2017

**EZFill™ VANITY MOUNTED AUTOMATIC SOAP DISPENSER (PAGE 1 OF 2)**



**SPECIFICATION**

EZFill™ Vanity Mounted Automatic Soap Dispensing System Soap Dispenser shall dispense liquid soap within pH range of 5.5~8.5 and within the viscosity range of 100–3800 cP (mPa•s) in stream cycles with volumes of approximately 0.007 oz (0.2 ml) to 0.08 oz (2.3 ml) in four (4) steps programmable by owner with remote control programming unit {optional, model 0390-R; supplied one (1) per six (6) pack} with factory preset at approximately 0.03 oz (0.8 ml). Operation is initiated by hands-free sensor controlled by microprocessor digital circuitry and peristaltic pump is powered by six (6) ‘D’-size 1.5V batteries (supplied by others) in a screw-locked IP67 rated compartment (provided) located under counter or an AC Adapter (also IP67 rated, provided, select model) plugged into GFCI outlet (by others). Unit shall have chrome plated spout and sensor housing with a highly polished finish over all exposed surfaces. Unit shall have LED in sensor to indicate function and battery condition. A self-adhesive label shall be provided for use at owner’s option to indicate dispenser function. Unit shall mount on vanity deck up to 2" [51] thick through 1" diameter [Ø25] hole minimum to 1-1/4" dia. [Ø32] maximum and shall resist forced rotation up to 177 in-lb<sub>f</sub> (20 Nm) with 0390-ARK properly installed (provided). **NOTE: Soap supply shall be from EZFill™ Vanity Mounted Top-Fill Port and Multi-Feed Tank (model 0390, supplied separately) with capacity of 169 oz (5 L) of liquid soap containing no abrasives or particulates.** Up to six (6) individual EZFill™ vanity mounted automatic soap dispenser units shall draw from each Multi-Feed tank located under counter through connection to under-counter soap distribution tubing (provided). Owner’s Manual and Installation Guide (OM & IG) shall be provided with unit in carton.

**EZFill™ Vanity Mounted Automatic Soap Dispensing System Soap Dispenser shall be Model № 0390-\_\_\_\_\_ {specify model suffix from schedule} of American Specialties, Inc., 441 Saw Mill River Road, Yonkers, NY 10701-4913**



**AMERICAN SPECIALTIES, INC.**  
 441 Saw Mill River Road, Yonkers, NY 10701  
 (914) 476.9000 • (914) 476.0688  
 www.americanspecialties.com

<b>MODEL №:</b>	<b>0390-(n)</b>
ISSUED:	01/14
REVISED:	12 JAN 2017

**EZFiii™ VANITY MOUNTED AUTOMATIC SOAP DISPENSER (PAGE 2 OF 2)**

**INSTALLATION**

Install spout and sensor housing to vanity deck with anti-rotation kit escutcheon flange, rubber washers and basin nut (supplied) through 1-1/8" diameter [Ø28.5] mounting hole and 5/32" dia. [Ø4] adjacent hole for anti-rotation pin of escutcheon flange. Mount pump/control module to convenient structure under vanity within 24" [610] of shank bottom with two (2) screws and wall anchors (supplied). Connect flex tubing from dispenser shank to fitting on top of pump/control module. Connect soap supply flex tubing (provided attached to fitting on pump/control housing) to one of six available connectors on Multi-Feed tank (supplied separately) so that tube end is just above bottom of tank. Connect spout control cable plug into control unit inline cable connector. Mount battery compartment in convenient location under vanity deck with two (2) screws and wall anchors (supplied) within easy reach of extension cable length and plug connector into mating inline power connector. Install six (6) 'D'-size 1.5V cells (supplied by others) in under-deck battery compartment according to polarity indication, plug extension cable jack into battery box socket in cover handle and screw lock cover. Alternatively, plug AC Adapter into GFCI power outlet located under vanity within 13.5 ft (412 cm) of pump/control housing and plug connector into mating inline power connector.

**OPERATION**

System shall operate each time an object is positioned within the sensing range of 1-3/16" to 3-15/16" ± 3/8" [30 to 100 ± 10] directly in front of the spout of the dispenser. A stream of appropriate viscosity non-abrasive liquid soap drops with total dispense amount of 0.03 oz (0.8 ml) will be pumped from the nozzle during each activation. Optional remote control unit Model № 0390-R (supplied {one (1) per six (6) pack} or order separately) will allow owner programming of alternate dispense amounts. See Model № 0390-R TDS and Owner's Manual for complete description of functions. Unit will dispense soap while batteries are at suitable charge level (or AC adapter is connected) and correct viscosity soap is present in the tank and system is correctly maintained to enable dispensing (red LED is not flashing continuously or does not remain dark when trigger attempt is made). LED will display red flash for sensing and continuous flashing for low battery condition. Push-button releases soap for easy soap priming. System shall allow filling soap from top of vanity without requiring removal of bottles under vanity. Up to six (6) individual dispensers will draw soap as required to operate until supply is depleted. Unused transfer ports are blocked with solid plugs (provided) to prevent overflow, contamination and evaporation. Soap is manually replenished and batteries are replaced on service interval determined by maintenance schedule. See OM & IG for complete description of features and operations.

Schedule of Model № Suffix Codes and Application

Model № Suffix	Service Application
1A	Universal Model, Battery Operation
1AC	Universal Model, AC Adapter Operation
3AC	AU Model, AC Adapter Operation
6-1A	Universal Model, Battery Operation, Six Pack
6-1AC	Universal Model, AC Adapter Operation, Six Pack
6-3AC	AU Model, AC Adapter Operation, Six Pack