



# AMERICAN SPECIALTIES, INC.

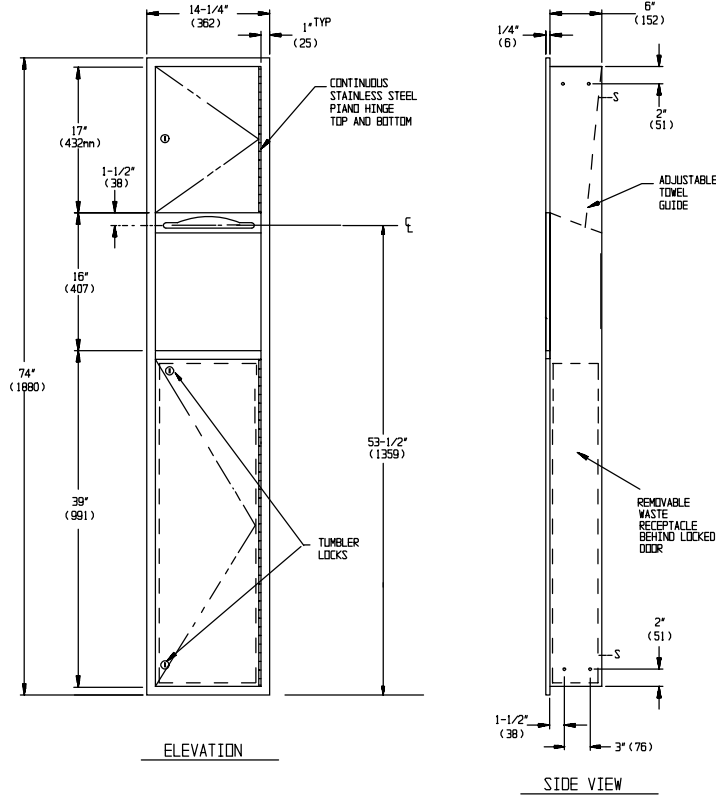
441 Saw Mill River Road, Yonkers, NY 10701 (914) 476-9000  
www.americanspecialties.com

MODEL No: 0460

ISSUED: 1-87

REVISED: 407

## RECESSED PAPER TOWEL DISPENSER AND WASTE RECEPTACLE



Note:  
Dimensions are in inches  
and (millimeters)

### SPECIFICATION

Recessed Paper Towel Dispenser and Waste Receptacle shall hold and dispense 800 standard multi-fold or 600 standard C-fold or 1100 standard single fold paper towels and shall have a waste capacity of 10.5 gal (40 liters). Cabinet, doors and dispenser unit shall be fabricated of 22 gauge type 304 stainless steel alloy 18-8. Doors shall be double-pan construction with fiberboard filler and shall be attached to cabinet side with a full-length 3/16" diameter (Ø4.8) stainless steel multi-staked piano hinge and shall be held closed with a tumbler lock keyed alike to other ASI washroom equipment. Towel dispensing slot shall have a fully hemmed-in rolled edge for snag-free dispensing and user safety. Adjustable guide shall be provided to allow dispensing of multi-fold or C-fold paper towels. Waste receptacle shall be fabricated of corrosion-protected steel with hemmed edges and a handle for ease of service removal. Face trim shall be 1" (25.4) wide formed from one piece with no miters, welding or open seams and have a 1/4" (6.4) square return to wall. Structural assembly of body and door components shall be of welded construction. Cabinet shall have no exposed fastening devices or spot-welded seams. All exposed surfaces shall be N<sup>o</sup> 4 satin finish and be protected during shipment with PVC film easily removable after installation.

**Recessed Paper Towel Dispenser and Waste Receptacle shall be Model N<sup>o</sup> 0460 as manufactured by American Specialties, Inc., 441 Saw Mill River Road, Yonkers, New York 10701-4913**

### INSTALLATION

Install unit in wall recess using N<sup>o</sup> 10 self-tapping screws (by others) through concealed mounting holes provided. Note that top of Rough Wall Opening (RWO) is 3/4" (19) below top of unit. Recommended mounting for general utility with towel slot at 58" (1473) is with top of RWO placed at 76-3/4" (1949) above finished floor (AFF).

**RWO required is 12-3/4" W x 72-1/2" H x 6" D (324 x 1842 x 153)**

### OPERATION

Towels are self-feeding until supply is depleted. Unit may be reloaded with a partial load in-place and will continue to feed properly. Waste receptacle is emptied manually on cycle determined by maintenance needs. Locking compartment prevents unauthorized access or removal.

Accessory Specialties

AMERICAN DISPENSER

Desert Ray Products

WATROUS INC.