



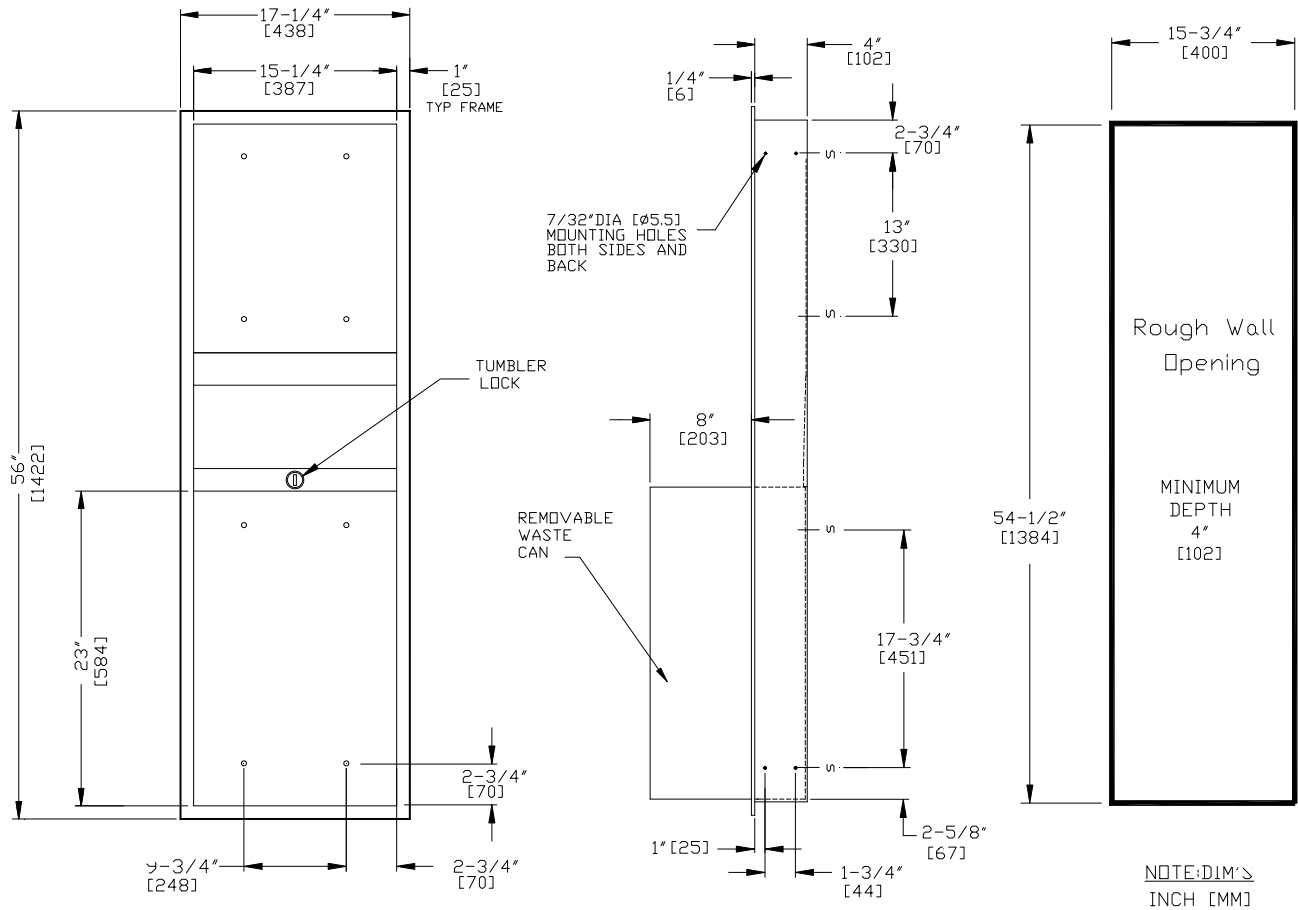
**AMERICAN SPECIALTIES, INC.**  
 441 Saw Mill River Road, NY 10701  
 (914) 476.9000 • (914) 476.0688  
 www.americanspecialties.com

**MODEL №: 0469-BL-M**

**ISSUED: 11/13**

**REVISED:**

**RECESSED CABINET WITH WASTE RECEPTACLE**



**SPECIFICATION**

Recessed Cabinet with Waste Receptacle shall have a waste capacity of 18 gal (68 liters). Frame, waste container and cabinet shall be 22 gauge type 304 stainless steel alloy 18-8. All exposed surfaces shall have satin finish and be protected during shipment with PVC film easily removable after installation. Waste container shall have hemmed edges for safety and shall be retained by a tumbler lock keyed alike to other ASI washroom equipment. Face trim shall be 1" (25) wide formed from one piece with no mitres, welding or open seams and have 1/4" (6) square return to wall. Structural assembly of all components shall be of welded construction. Cabinet shall have no exposed fastening devices or spot-welded seams.

Recessed Cabinet with Waste Receptacle shall be Model № 0469-BL-M as manufactured by American Specialties, Inc., 441 Saw Mill River Road, Yonkers, New York 10701-4913.

**INSTALLATION**

Mount unit in wall recess using four (4) N<sup>o</sup> 10 self tapping screws (by others) through concealed mounting holes provided. For compliance with 2010 ADA Accessibility Standards unit should be installed so that owner supplied towel dispenser slot may be installed 48" (1219) maximum AFF. Note that top of RWO is 3/4" (19) below top of unit.

**Rough Wall Opening (RWO) required is 15-3/4"W x 54-1/2"H x 4" D minimum (400 x 1384 x 102)**

**OPERATION**

Owner provides and installs chosen PTD dispenser following supplier instructions. Waste container is emptied manually on cycle determined by maintenance needs. Locked receptacle prevents unauthorized removal.