

**Toilet Seat Cover & Toilet Tissue Dispenser, Dual Access for Handicapped – Partition Mounted, Reverse**

*Specialty Accessories*

*MasterFormat Section 10 28 13*

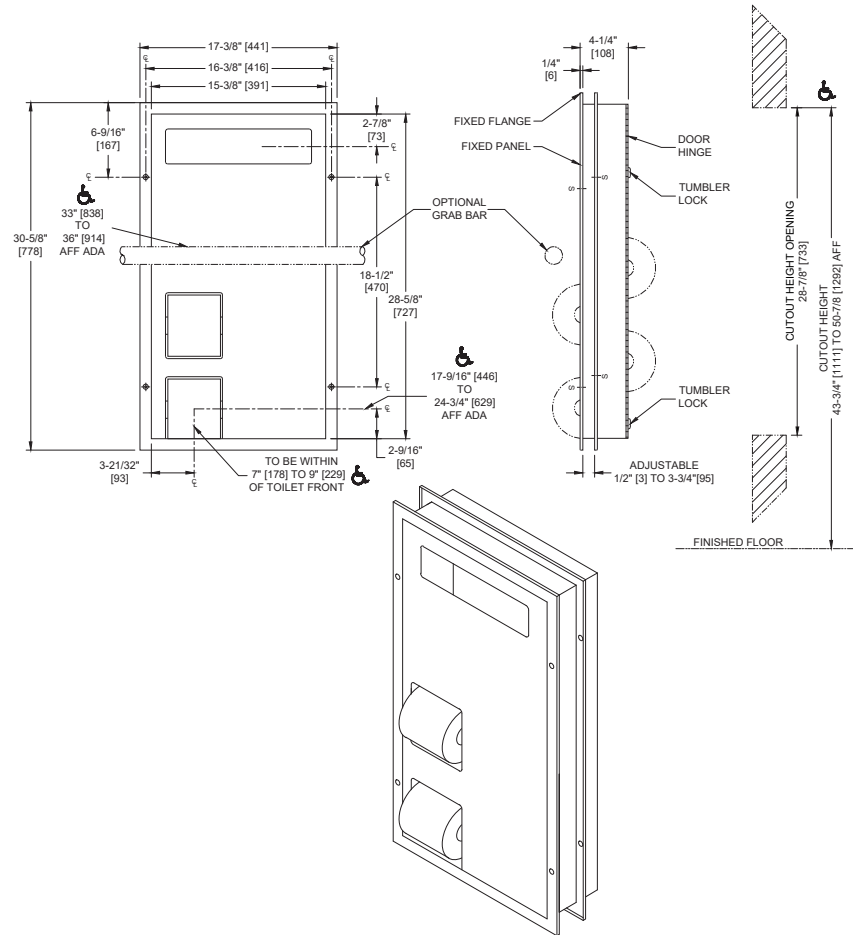


Scan for  
Information



**SUSTAINABILITY/LEED**

MR 4.1 (1) MR 6 (1) EQ 4.2 (1)  
MR 4.2 (1) EQ 4.1 (1) EQ 4.4 (1)



**NOTE:**  
ALL DIM'S INCH [MM]  
ILLUSTRATION FOR REF ONLY AND NTS

**PRODUCT OVERVIEW**

Toilet tissue dispenser on opposite sides from 0484-HC. Holds and dispenses 1000 standard single or half-fold paper toilet seat covers contained in supply box and four (4) standard or 1800 sheet 4-1/2" [114] x 5-1/4" [133] diameter toilet paper rolls. One side mounts flush to partition of barrier-free side to allow for grab bar. Usable both sides but serviced from one side. Access door is opposite HC stall. Internal baffles prevent line of sight view from either side through unit at any time. Cabinet door is held closed with two (2) tumbler locks. Cabinet includes theft and vandal resistant rollers molded of high-impact resistant plastic with integral molded-in stainless steel endpins and four (4) rollers [p/n R-004] (supplied).

**KEY FEATURES & SPECIFICATIONS**

- Dual Access Combination Unit for ADA Stalls
- Internal baffles prevent line of sight between stalls
- Type 304 Stainless Steel - Satin Finish
- Partition Mounted
- ADA Compliant - One side mounts flush on barrier-free compartment to allow grab bar clearance.

## **OPERATION & MAINTENANCE**

Seat covers are self-feeding until supply is depleted. Toilet paper rolls feed freely until depleted and level of supply is constantly visible for low-level warning. Toilet paper rolls and paper seat covers are serviced by unlocking and opening door opposite HC stall on schedule determined by maintenance requirements. Locked door prevents inadvertent dumping and unauthorized removal. Toilet paper spindles are carried in vandal resistant subframe accessible when door is opened. Barrier baffle panels preserve privacy between stalls at all times.

## **TECHNICAL INFORMATION / PRODUCT PROPERTIES**

Property	Value
Dimensions	17-3/8" x 30-5/8" x 4-1/2" [441 x 778 x 114]
Construction	Type 304 Stainless Steel - Satin Finish
Mounting	Partition Mounted
Capacity	N/A

## **INSTALLATION**

Mount unit in partition using #10 x 3/4" [M5x19] self-threading Philips oval head screws (supplied). Holes in flanges are offset to prevent screw interference. For compliance with ICC/ANSI A-117.1 and ADA Accessibility Guidelines top of cutout should be between 43-3/4" and 50-7/8" [1111 and 1292] AFF. One trim-mounting flange adjusts for partition thickness of 1/2" to 3-3/4" [13 to 95]. To comply with CalDAG mounting height, top of cutout should be 42-7/8" [1089] AFF maximum. Note partition cutout is 7/8" [22] below top of face trim. If optional grab bar is used (not supplied) it is positioned across unit with top of grip surface at 33" [838] AFF minimum. Partition Cut-Out (PCO) required is 15-1/2" W x 28-7/8" H [394 x 733] x 1/2" to 3-3/4" [13 to 95] thick partition

## **ADDITIONAL INFORMATION**

## **WARRANTY**

One (1) Year from date of Invoice