



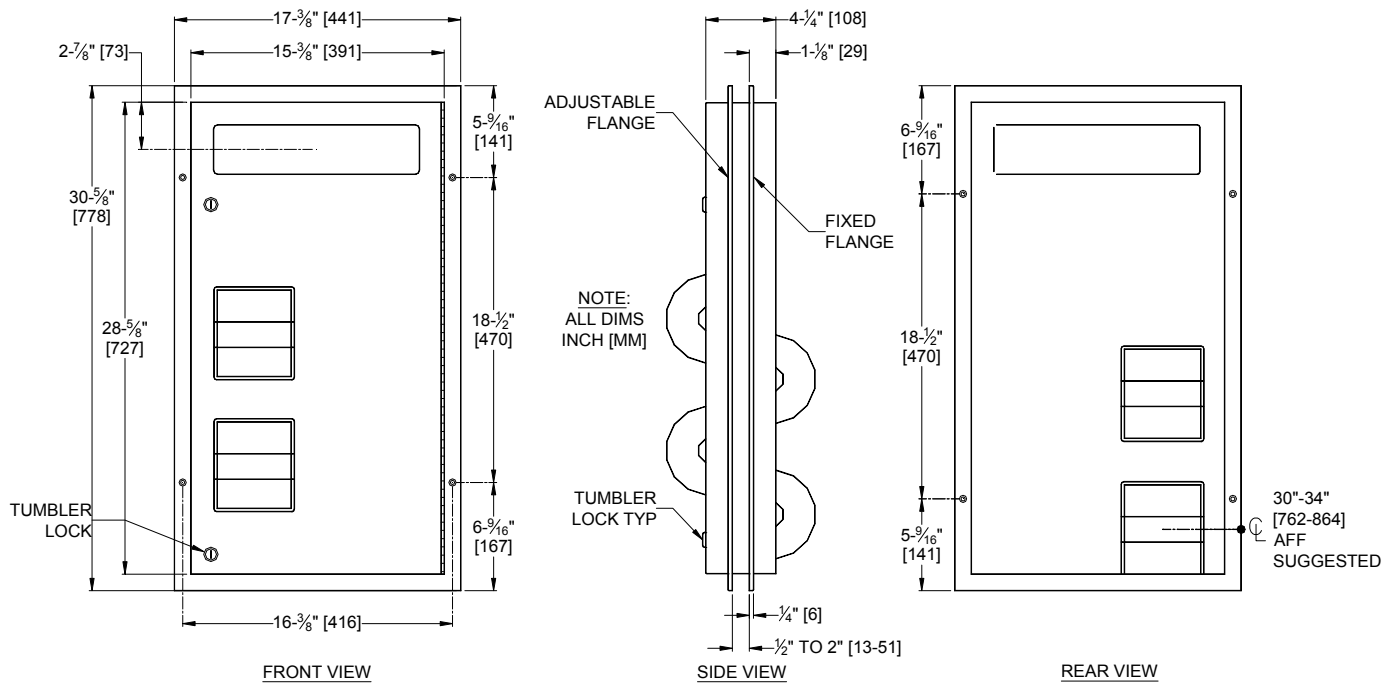
AMERICAN SPECIALTIES, INC.
 441 Saw Mill River Road, NY 10701
 (914) 476.9000 • (914) 476.0688
 www.americanspecialties.com

MODEL №: 0484-R

ISSUED: 09/11

REVISED: 07 March 2013

PARTITION MOUNTED DUAL ACCESS SEAT COVER AND TOILET PAPER DISPENSER



SPECIFICATION

Partition Mounted Dual Access Seat Cover and Toilet Paper Dispenser shall hold and dispense 1000 paper seat covers and four (4) rolls standard or 1800 sheet 4-1/2" x 5-1/4" diameter (114 x Ø133) toilet paper. Seat dispenser and toilet paper dispenser door shall be 18 gauge type 304 stainless steel alloy 18-8. Face frame and cabinet shall be 22 gauge. All exposed surfaces shall have satin finish and be protected by PVC film easily removed after installation. Seat cover cutout shall have a fully deburred edge for snag-free dispensing and user safety. Service door shall be attached to cabinet at side with a full-length 3/16" diameter (Ø5) stainless steel multi-staked piano hinge and shall be held closed with two (2) tumbler locks keyed alike to other ASI washroom equipment. Face trims shall be 1" (25) wide formed from one piece with no miters, welding or open seams and have 1/4" (6) square returns to face of partition. Structural assembly of all components shall be of welded construction. Internal baffles shall prevent line of sight view from either side through unit at any time. Cabinet shall include theft and vandal resistant rollers that shall be of molded high-impact resistant plastic with integral molded-in stainless steel endpins and four (4) rollers [p/n R-004] shall be supplied.

Partition Mounted Seat Cover and Toilet Paper Dispenser shall be Model № 0484-R as manufactured by American Specialties, Inc., 441 Saw Mill River Road, Yonkers, New York 10701-4913

INSTALLATION

Mount unit in partition using № 10 x 3/4" Philips oval head self-tapping screws (supplied). Holes in flanges are offset to prevent screw interference. Install unit so that top of face trim is 57" to 61" (1448 to 1549) AFF (Above Finished Floor). Note partition cutout is 7/8" (22) below top of face trim.

Partition Cut Out required is 15-1/2" W x 28-7/8" H x 1/2" to 2" thick partition (394 x 733 x 13 to 51)

OPERATION

Seat covers are self-feeding until supply is depleted. Toilet paper rolls feed freely until depleted and level of supply is constantly visible. Toilet paper rolls and paper seat covers are serviced from one side, for both stalls, by unlocking and opening door. Locked door prevents unauthorized removal. Toilet paper spindles are carried in vandal resistant sub-frame accessible when door is opened. Barrier baffle panels preserve privacy between stalls at all times.