



AMERICAN SPECIALTIES, INC.

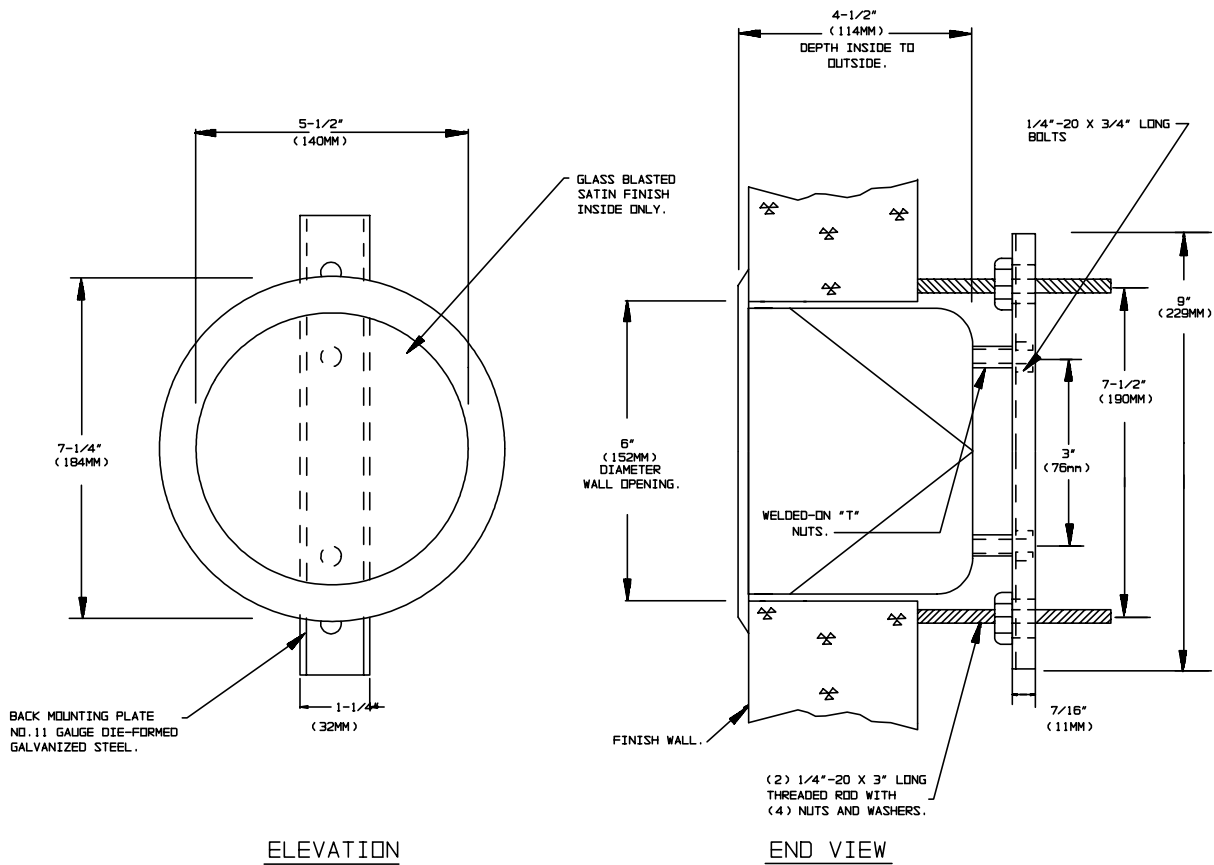
441 Saw Mill River Road, Yonkers, NY 10701 (914) 476-9000

MODEL No: 110

ISSUED: 1-87

REVISED: 9-04

RECESSED TOILET PAPER HOLDER



SPECIFICATION

Recessed Toilet Paper Holder with round bezel for chase mounting shall hold one (1) standard toilet paper roll and shall be fabricated of alloy 18-8 stainless steel, type 304, 14 gauge. Beveled trim shall have N° 4 satin finish. Interior shall have glass blasted satin matte finish. Back mounting plate shall be fabricated of 11 gauge die-formed galvanized steel. Hardware mounting kit (supplied) shall include two (2) 3"(76mm) long 1/4"-20 threaded rods with four (4) washers and nuts each and two (2) 1/4"-20 x 3/4" (19mm) bolts to hold back mounting plate in place. Orientation of threaded rods shall accommodate shallow or deep wall installation. Back of paper holder shall be provided with two (2) welded-on internal 1/4"-20 threaded anchor T-nuts.

Recessed Toilet Paper Holder with round bezel for chase mounting shall be Model N° 110 as manufactured by American Specialties Inc., 441 Saw Mill River Road, Yonkers, New York 10701-4913

INSTALLATION

For compliance with ADA Accessibility Guidelines install unit so that centerline of paper holder is between 19"(483mm) minimum above finished floor (AFF) to 44"(1118mm) maximum AFF and leading edge of roll is no farther than 36"(914mm) from back wall behind commode. Recommended mounting height is 32"(813mm) minimum AFF. Recess mount paper holder into wall opening. For shallow wall mount plate to back of holder with two (2) 1/4"-20 x 3/4" bolts screwed into T-nuts. Secure unit to wall by adjusting two (2) 1/4"-20 x 3" long threaded rods with washers and nuts to accommodate wall thickness.

Rough Wall Opening (RWO) required is..... 6" (152mm) diameter

OPERATION

One roll of toilet paper is stored in the 5-1/2"(140mm) dia. x 4-1/2"(114mm) deep cylindrical holder. Toilet paper is replenished on a cycle determined by maintenance needs.

Accessory Specialties

AMERICAN DISPENSER

Desert Ray Products

WATROUS inc.