



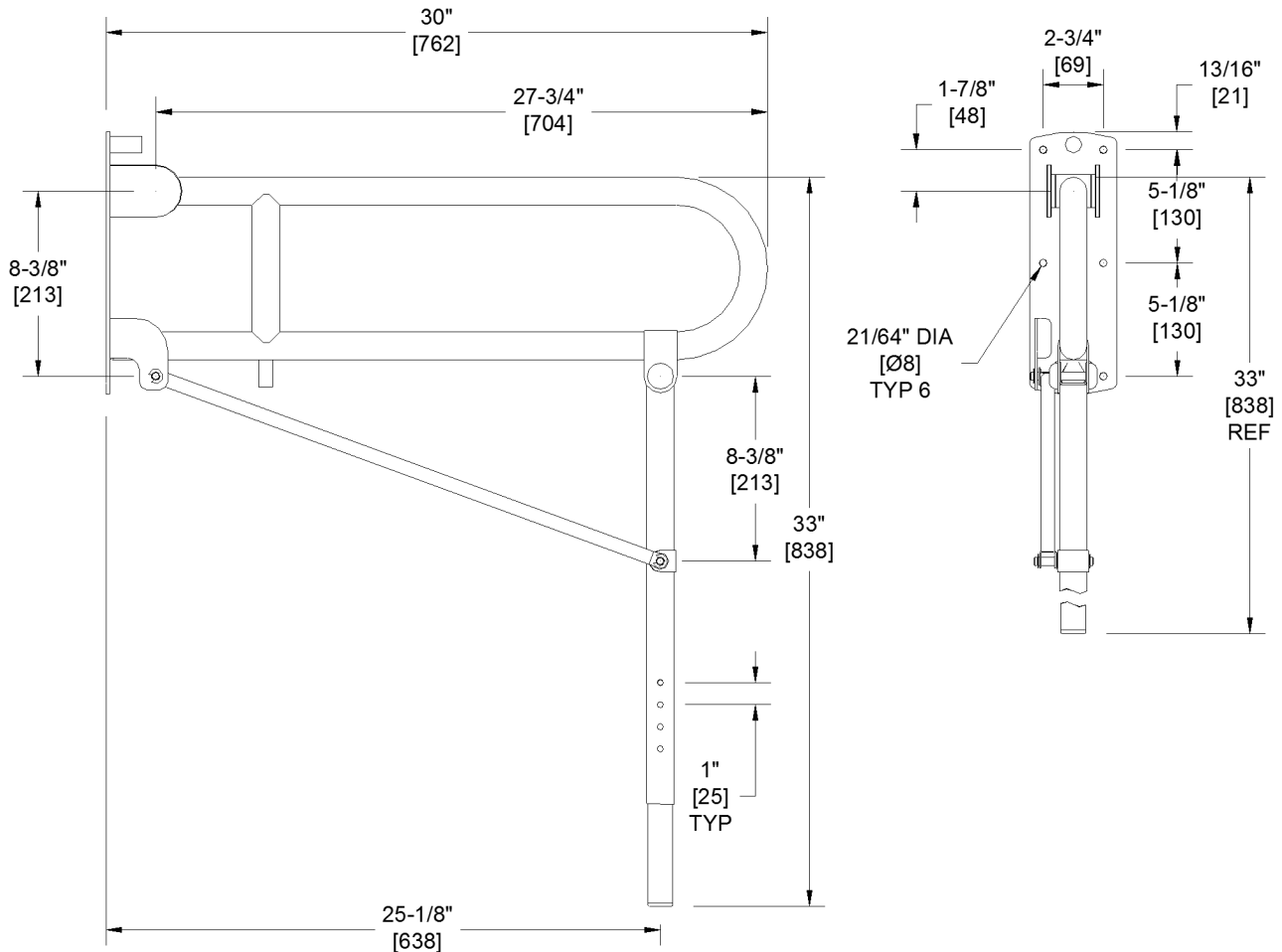
AMERICAN SPECIALTIES, INC.
 441 Saw Mill River Road, Yonkers, NY 10701
 (914) 476.9000 • (914) 476.0688
 www.americanspecialties.com

MODEL №: 3420

ISSUED: 01/14

REVISED: 19 AUG 2015

SWING-UP GRAB BAR WITH SUPPORT LEG (PAGE 1 OF 2)



SPECIFICATION

Swing-up Grab Bar with Support Leg shall be fabricated of stainless steel type 304 alloy 18-8. Grab bar tubing shall be 18 gauge x 1-1/4" diameter (Ø32). Support leg tubing shall be 18 gauge x 1-1/4" and 1-1/8" diameter (Ø32 and Ø29) with snap release solid pin to allow easy setting for full range of ADA standard mounting heights. Mounting bracket shall be 6 gauge [3/16" thick (4.8)] back plate with six (6) 21/64" diameter (Ø8.5) mounting holes provided and shall have 7 gauge [11/64" thick (4.4)] hinge pivot side plates. Control link shall be 16 gauge tubing x 5/8" diameter (Ø16) with 14 gauge clevis brackets welded on ends and with 11 and 14 gauge pivot brackets welded to back plate and arm lower tube operating on 3/8" diameter (Ø9.5) solid pivot pins. Bar shall have 1-1/2" diameter (Ø38) tubing hinge with three (3) preset detent stop positions and polymer anti-friction bearing plates to ensure quiet and smooth operation. Stops provided are at full up, 45° raised and full down. A polymer bumper is provided at the bottom bar end to prevent banging when lowered into use position. All exposed surfaces shall be satin finish. Structure shall be of welded construction. All exposed edges and corners shall be radiused and burr free. Tension for bar movement is accomplished by internal detent stops pawl provided. Grab bar shall be operable with only one hand. Bar mounting plate shall have a black rubber tubular stop bumper to prevent raised bar from banging into wall. Support leg automatically retracts to storage position when arm is raised to full up position.

Swing-up Grab Bar with Support Leg shall be Model № 3420 of American Specialties, Inc., 441 Saw Mill River Road, Yonkers, New York 10701-4913



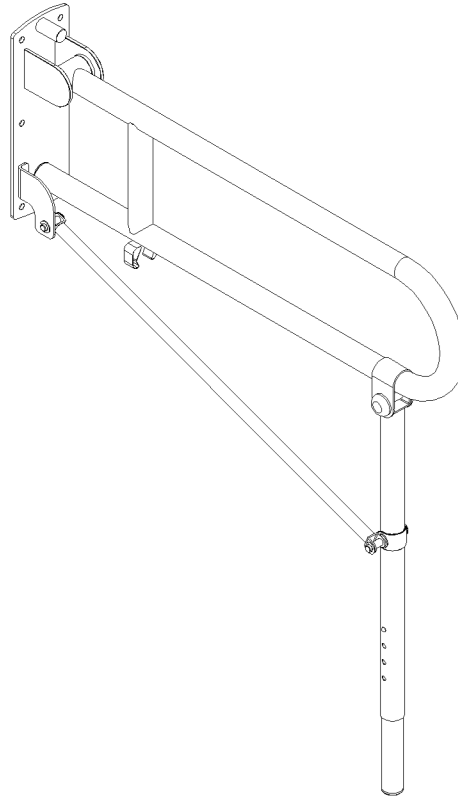
AMERICAN SPECIALTIES, INC.
441 Saw Mill River Road, Yonkers, NY 10701
(914) 476.9000 • (914) 476.0688
www.americanspecialties.com

MODEL №: 3420

ISSUED: 01/14

REVISED: 19 AUG 2015

SWING-UP GRAB BAR WITH SUPPORT LEG (PAGE 2 OF 2)



INSTALLATION

This unit is surface mounted. Installer/construction contractor must provide concealed anchor plate or blocking as specified in construction documents or as required by local building codes prior to wall finishing. Fasten wall plate to concealed anchor or blocking plate with appropriate hardware (by others) through each of six (6) mounting holes provided. See "STRENGTH" section below. Note that concealed mounting plates or anchors and hardware are not supplied with this product. Ensure that mounting configuration complies with local building codes. For compliance with 2010 ADA Accessibility Standards install unit so that top of horizontal bar is between 33" and 36" (838 to 914) above finished floor (AFF) for use by adults. Quick-set lock pin allows easy selection of correct length support leg for mounting height chosen and should be determined prior to bolting unit tight to wall.

STRENGTH

ASI grab bars are designed to meet and exceed 2010 ADA Accessibility Standards that fabricated product shall be of adequate strength to support a load in excess of 250 pounds (113.4 kg). Mounting to the wall is a critical part of the system to meet this requirement. The fastener system must be adequately sized to withstand the shear, tension or pullout, and torsion loads generated by the maximum loading.

OPERATION

Swing-up Grab Bar is lowered manually to horizontal position for support and raised for departure. Detent position stops prevent grab bar from dropping from the vertical position. Intermediate bar rest position at 45° raised is provided to allow easy lifting for access and egress by frail users. Balance tension is preset by factory and does not require adjustment. It is the owner's responsibility to ensure continued safe operation by performing periodic inspection and effecting any repairs required by adverse environmental conditions. Bumper provides positive bar stop at top rest position. Support leg automatically folds into storage position when bar arm is raised. Plastic tube cap closes end of bottom tube and provides smooth solid contact with back plate.

OPTIONS AVAILABLE

For integral toilet paper roll holder add suffix -25. For non-slip gripping surface add suffix -P (peened top bar surface).

Accessory Specialties

AMERICAN DISPENSER

Desert Ray Products

WATROUS INC.