



AMERICAN SPECIALTIES, INC.

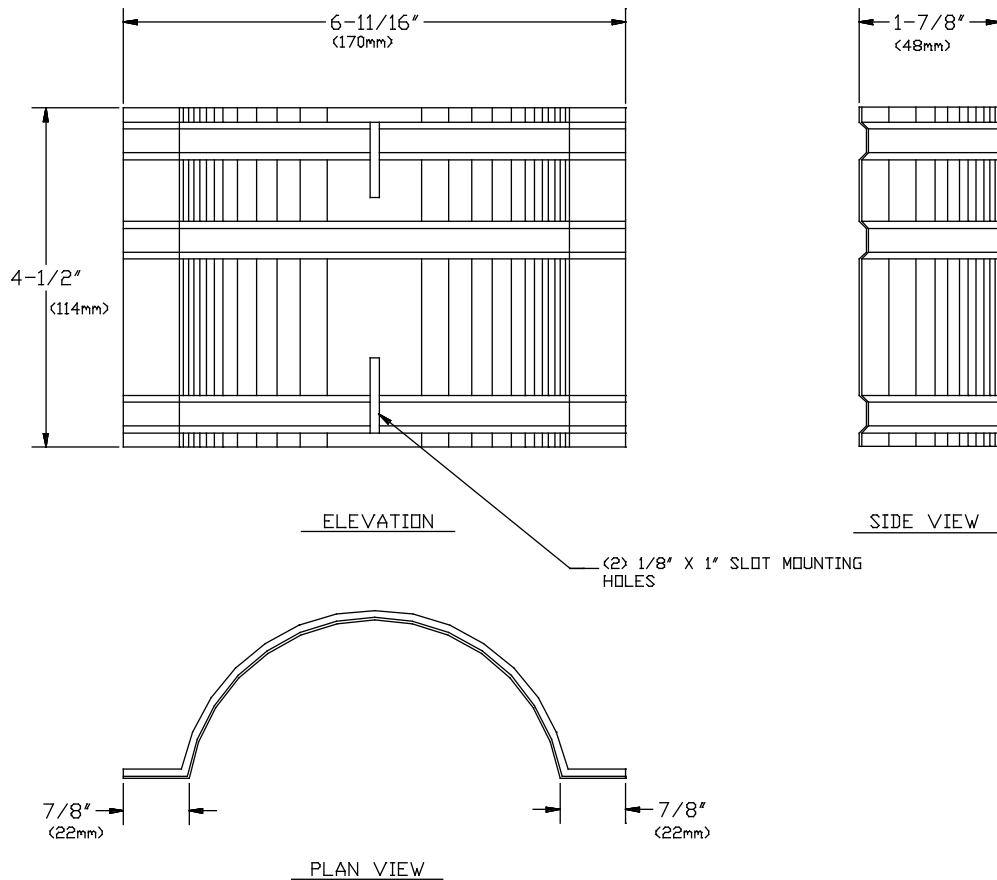
441 Saw Mill River Road, Yonkers, NY 10701 (914) 476-9000

MODEL No: 39

ISSUED: 1-87

REVISED: 7-99

DRY WALL MOUNTING CLAMP



SPECIFICATION

Dry Wall Mounting Clamp shall be fabricated of N^o20 gauge corrosion protected steel. Unit shall be provided with universal mounting slots to accommodate self tapping screws (supplied separately with unit specified) for use with A.S.I. Model N^o0402-DZ, N^o0404-DZ, N^o0406-DZ, N^o0410-DZ, N^o7402-D (B/S), N^o7402-HD (B/S), N^o74022-D (B/S), N^o74022-HD (B/S), N^o7404-D (B/S), N^o7406-D (B/S), and N^o7410-D (B/S). Clamp shall provide secure anchorage in drywall installation for listed units with specified RWO.

Dry Wall Mounting Clamp shall be Model N^o39 as fabricated by American Specialties, Inc., 441 Saw Mill River Road, Yonkers, New York 10701-4913

INSTALLATION

Provide appropriate wall opening. Loosely attach clamp to the back of the unit with screws provided. Insert into wall opening and adjust clamp so that it grips surface inside opening. Secure by tightening screws.

Accessory Specialties

AMERICAN DISPENSER

Desert Ray Products

WATROUS INC.