



**AMERICAN SPECIALTIES, INC.**

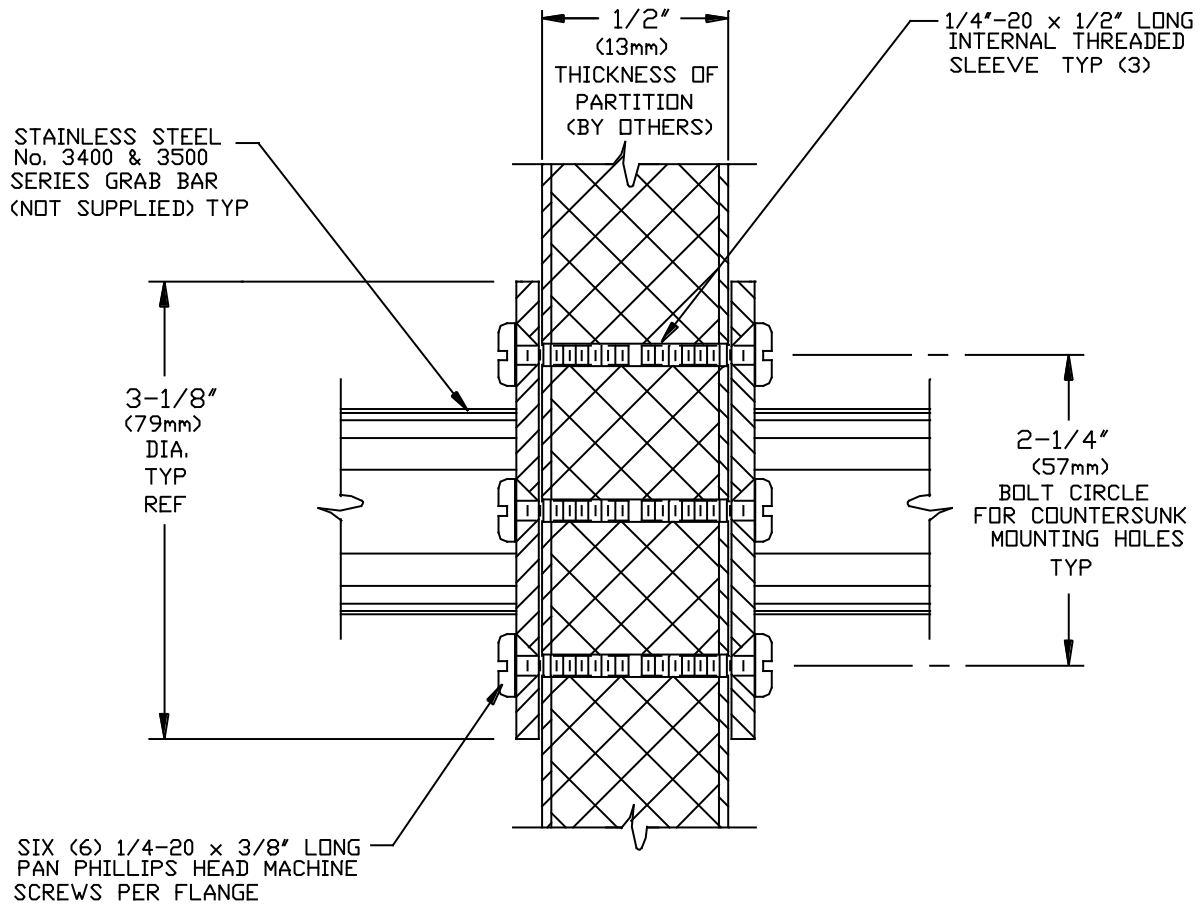
441 Saw Mill River Road, Yonkers, NY 10701 (914) 476-9000

MODEL No: 3924

ISSUED: 1-87

REVISED: 5-99

**ANCHOR FOR EXPOSED BACK-TO-BACK MOUNTED GRAB BARS**



**SPECIFICATION**

Anchor for Exposed Back-to-Back Mounted Grab Bars (model 3400 and 3500) on 1/2" (13mm) thick Metal Partition, shall be 1/4-20 x 1/2" long female threaded posts with 1/4-20 x 3/8" long Phillips pan head machine screws. Anchor kit shall contain (3) female posts and (6) machine screws. Specify one (1) kit per flange.

**Anchor for Metal Partition Back-to-Back Mounted Grab Bars shall be Model N°3924 of American Specialties, Inc., 441 Saw Mill River Road, Yonkers, New York 10701- 4913**

**INSTALLATION**

For compliance with ADA Accessibility Guidelines, mount grab bar so that horizontal centerline is 33" (838mm) minimum to 36" (914mm) maximum above finished floor. Locate grab bar in exact mounting position on both sides of suitably reinforced partition, and transfer centerlines of flange mounting holes onto partition. Drill holes through partition at those marks. Insert machine screws through grab bar and install female posts. Install this assembly onto partition and from other side install other grab bar with remaining machine screws.

**Accessory Specialties**

**AMERICAN DISPENSER**

**Desert Ray Products**

**WATROUS INC.**