



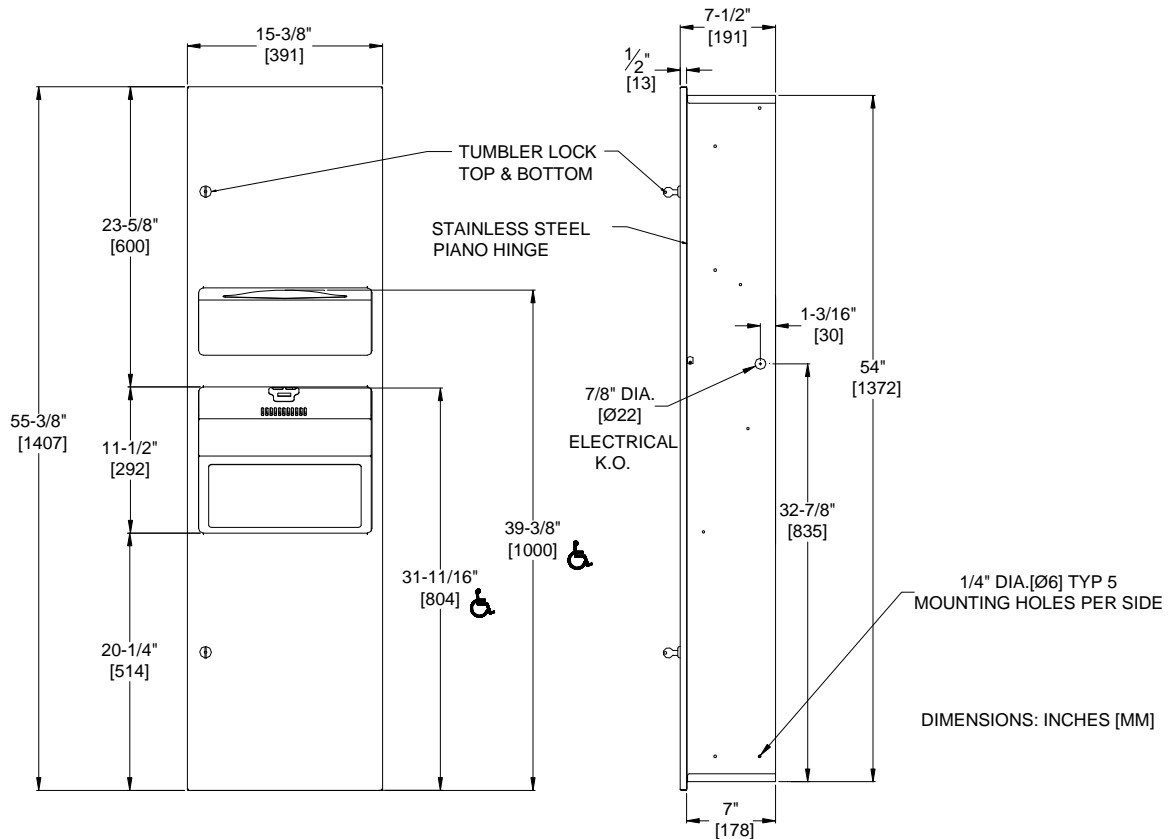
AMERICAN SPECIALTIES, INC.
 441 Saw Mill River Road, Yonkers, NY 10701
 (914) 476.9000 • (914) 476.0688
 www.americanspecialties.com

MODEL №: 64672

ISSUED: 27 Feb 2014

REVISED:

Recessed Combo Three-in-One Paper Towel Dispenser with Waste Receptacle and Provision for Automatic Electric Hand Dryer (Page 1 of 2)



SPECIFICATION

Recessed Combo Three-in-One Paper Towel Dispenser with Waste Receptacle and Provision for Automatic Electric Hand Dryer (by others) shall hold and dispense 500 standard multi-fold or 400 standard C-fold paper towels and shall have a waste capacity of 6.8 gal (26 L). Dispensing of multi-fold or C-fold paper towels shall not require an additional adapter. Cabinet, door, dispenser and waste receptacle (WR) shall be type 304 stainless steel alloy 18-8. All exposed surfaces shall have satin finish and shall be protected during shipment by PVC film easily removable after installation. Cabinet shall be 20 gauge with a 5/8" (16) wide perimeter trim to lay flush against wall and shall have no exposed fastening devices or visible seams. Full-face door shall be 18 gauge, fabricated from one piece with no miters or seams on face and shall have 1/2" (13) square returns to the wall. Door shall be attached to cabinet body with a full length 3/16" diameter (Ø4.8) stainless steel multi-staked piano hinge and shall be held closed with two (2) tumbler locks keyed alike to other ASI washroom equipment. Towel dispensing slot shall have a fully hemmed-in rolled edge for snag-free dispensing and user safety. WR shall have piano-hinge mounted closed top with spring-hinge closed flap door and hemmed edges for safety. Structural assembly of all cabinet components shall be of welded construction. Hand Dryer (by others) shall operate automatically from IR sensor that shall activate dryer when hands are placed in sensor zone.

Recessed Combo Three-in-One Paper Towel Dispenser with Waste Receptacle and provision for Automatic Electric Hand Dryer shall be Model № 64672 as manufactured by American Specialties, Inc., 441 Saw Mill River Road, Yonkers, New York, 10701-4913, USA



AMERICAN SPECIALTIES, INC.
441 Saw Mill River Road, Yonkers, NY 10701
(914) 476.9000 • (914) 476.0688
www.americanspecialties.com

MODEL №: 64672

ISSUED: 27 Feb 2014

REVISED:

**Recessed Combo Three-in-One Paper Towel Dispenser with Waste Receptacle
and Provision for Automatic Electric Hand Dryer (Page 2 of 2)**

INSTALLATION

Unit is mounted in wall recess using № 10 (M5) self-tapping screws (by others) through concealed mounting holes provided. Recommended mounting height of 60" (1524) to top of towel dispenser slot requires top of Rough Wall Opening (RWO) to be 75-1/2" (1918) AFF. For compliance with HC accessibility standards requiring towel dispenser to be below 43-5/16" (1100) AFF and dryer nozzle to be above 35-7/16" (900) AFF locate top of RWO at 58-13/16" (1494) AFF. See unit diagram for electrical service cable rough-in location. Electric service (provided by others) is brought to RWO at location indicated on diagram above and is hooked up (by others) in accordance with schematic and OM & IG provided with dryer unit. Dryer is mounted to chassis wiring box with four (4) 1/4-20 pan head screws (provided by others) through bushings in heavy-duty back plate. Electrical service is connected (by Electrician) prior to installing cover. Cover is secured to back plate with recessed socket-pan-head tamper-resistant pin-hex bolts (supplied by others) with security pin-hex driver (supplied by others). Note that top of RWO is 1/2" (13) below top of unit.

RWO required is 14-3/32" W x 54-3/8" H x 7-1/4" D minimum (358 x 1381 x 184)

OPERATION

Paper towels are manually withdrawn through dispensing slot. Unit will continue to feed towels properly when reloaded with a partial load in place. User activates dryer by placing hands in the sensor zone indicated by graphic on door. Drying time is automatically initiated as long as movement is sensed up to the maximum run time to prevent accidental hold-on. Dryer automatically shuts off after time-out when hands are removed from the sensor zone. Re-fill dispenser by unlocking door and replacing towels for an empty or partially empty unit. Dispenser supply is replenished and waste container is emptied manually on cycles determined by maintenance needs. Locking full-face door over compartments prevents unauthorized access or removal. Full cover and spring-hinge flap door on WR prevents unsightly overloads.