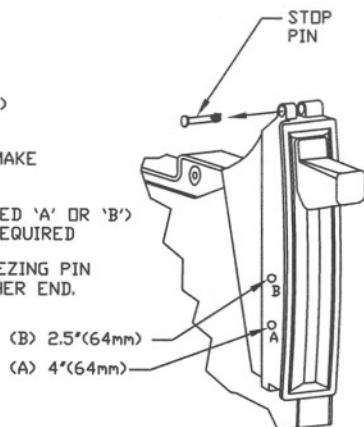


INSTRUCTIONS

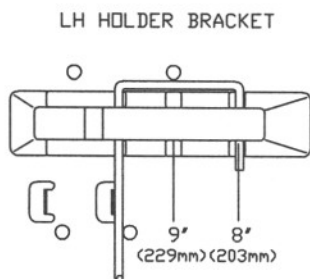
A. LENGTH OF PAPER FEED ADJUSTMENT

1. LEAVE STOP PIN IN STORAGE POSITION TO MAINTAIN FACTORY PRE-SET 5" (127mm) PAPER FEED LENGTH.
2. PULL STOP PIN FROM STORAGE HOLE TO MAKE ADJUSTMENT.
3. INSERT PIN INTO HOLE AT SETTING (MARKED 'A' OR 'B') ON SIDE OF HOUSING FOR FEED LENGTH REQUIRED
4. REMOVE PIN FROM A OR B HOLE BY SQUEEZING PIN PRONGS TOGETHER WHILE PULLING ON OTHER END.



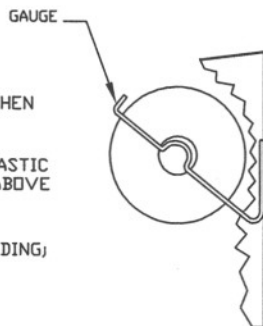
B. TOWEL HOLDER ROLL WIDTH ADJUSTMENT

1. LEAVE TOWEL HOLDER BRACKET IN FACTORY PRE-SET POSITION FOR 8" (203mm) WIDE ROLL
2. PUSH LH BRACKET UP OUT OF RETAINER HOLES TO MAKE ADJUSTMENT. A PRY TOOL MAY BE USED IF WIREFORM IS TIGHT IN RETAINER HOLES.
3. SLIDE BRACKET OVER TO 9" (229mm) POSITION AND INSERT WIREFORM INTO RETAINER HOLES AT NEW SETTING. PUSH DOWN TO LOCK.



C. LOADING NEW ROLL INTO EMPTY CABINET

1. ORIENT ROLL WITH LEADING EDGE FEEDING FROM BACK OR BOTTOM.
2. PLACE ROLL ON HOLDER BRACKETS; FIRST ON LH, THEN ON RH TO ROLL FREELY.
3. INSERT LEADING EDGE OF TOWEL BEHIND FRONT PLASTIC ROLLER, PINCHED AGAINST BLACK RUBBER ROLLER ABOVE WOOD ROLLER.
4. OPERATE MECHANISM TO ENSURE SMOOTH PAPER FEEDING; CLOSE DOOR.



D. LOADING NEW ROLLER WITH AUTO-FINISH OF STUB ROLL

1. PERFORM THIS PROCEDURE ONLY IF IN-USE ROLL IS SMALLER THAN DIAMETER GAUGE ON RH HOLDER BRACKET (BENT TIP OF WIREFORM).
2. HOLD FRONT PLASTIC ROLLER IN READY POSITION BY PULLING FORWARD.
3. REMOVE IN-USE ROLL FROM HOLDER BRACKETS AND RETAIN (DO NOT RETRACT PAPER FROM FEED PATH); REMOVE ANY OLD ROLL CORE FROM BOTTOM OF CABINET AND DISCARD.
4. LAY STUB ROLL INTO BOTTOM OF CABINET BEHIND REAR PLASTIC ROLLER WITH TOWEL FEEDING FROM BOTTOM OF ROLL OVER TOP OF PLASTIC ROLLER.
5. INSTALL NEW ROLL (PER C.1 & C.2, ABOVE) WITH LEADING EDGE OF PAPER BEHIND FRONT PLASTIC ROLLER AND IMPALED ON FEED SPIKE (WIRE TIP).
6. OPERATE MECHANISM TO ENSURE SMOOTH PAPER FEEDING FROM EXISTING IN-USE STUB ROLL; CLOSE DOOR. NEW ROLL WILL START WHEN STUB IS DONE.

