



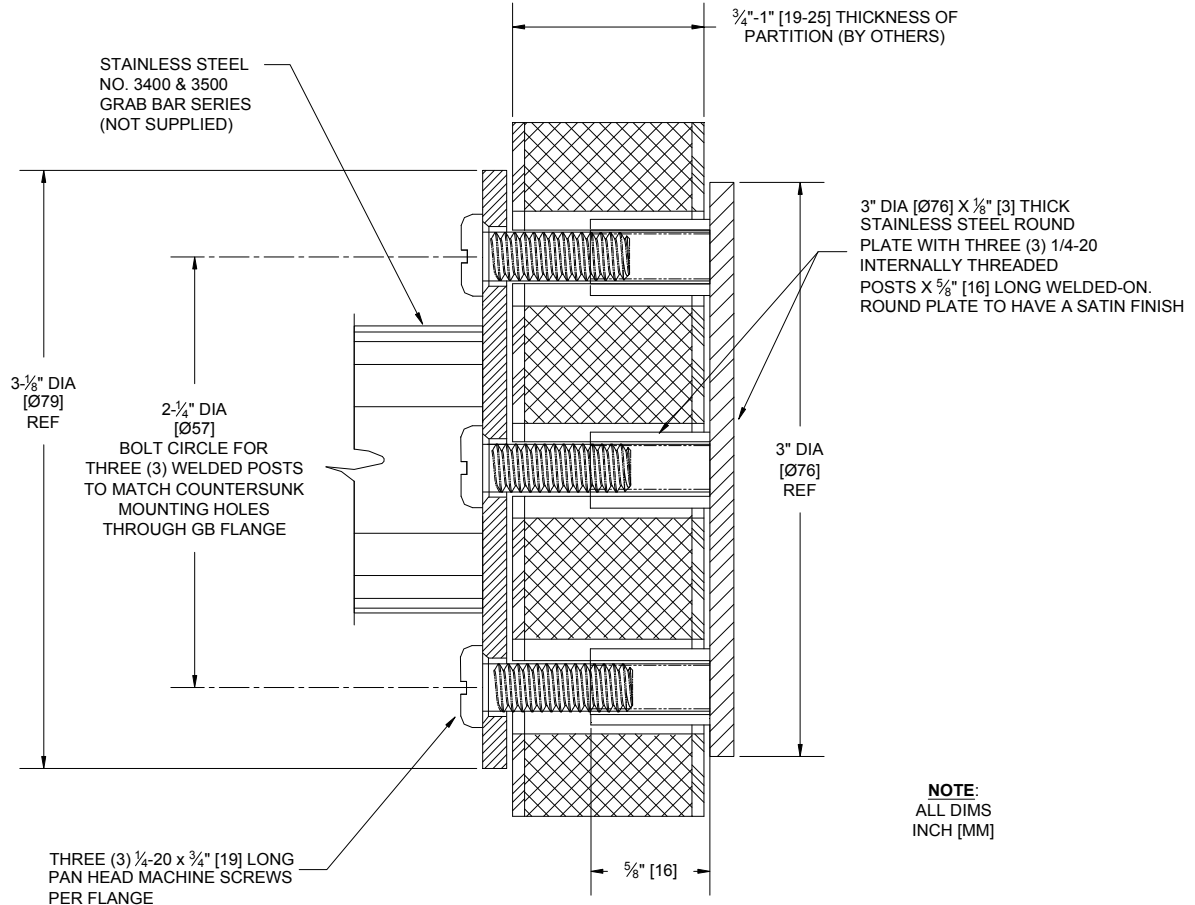
AMERICAN SPECIALTIES, INC.
441 Saw Mill River Road, NY 10701
(914) 476.9000 • (914) 476.0688
www.americanspecialties.com

MODEL №: 3923

ISSUED: 1-87

REVISED: 31 Jan 2013

ANCHOR FOR 3/4" - 1" (19-25) THICK PARTITION EXPOSED MOUNTED GRAB BARS



SPECIFICATION

Anchor for 3/4" - 1" (19-25) Thick Partition Exposed Mounted Grab Bars shall be type 304 stainless steel alloy 18-8. and shall have three (3) 1/4-20 internally threaded posts welded-on. Exposed side of plate shall have a satin finish. Anchor kit shall contain (1) Plate and (3) 1/4-20 x 3/4" (19) long Phillips or slotted pan head machine screws. Specify one (1) kit per flange.

Anchor shall be Model № 3923 as manufactured by American Specialties, Inc., 441 Saw Mill River Road, Yonkers, NY 10701-4913

INSTALLATION

Place grab bar on partition at desired location and mark mounting hole locations. Drill 3/8" diameter (Ø10) holes through the partition at marked locations. Place anchor at far side of partition and secure grab bar to it on near side with 1/4-20 machine screws (provided). Refer to grab bar specification for correct procedure and strength data. For compliance with 2010 ADA Accessibility Standards mount unit so that top of horizontal grab bar is 33" (838) minimum above finished floor (AFF) to 36" (914) maximum above finished floor, unless lower code applies.