



# AMERICAN SPECIALTIES, INC.

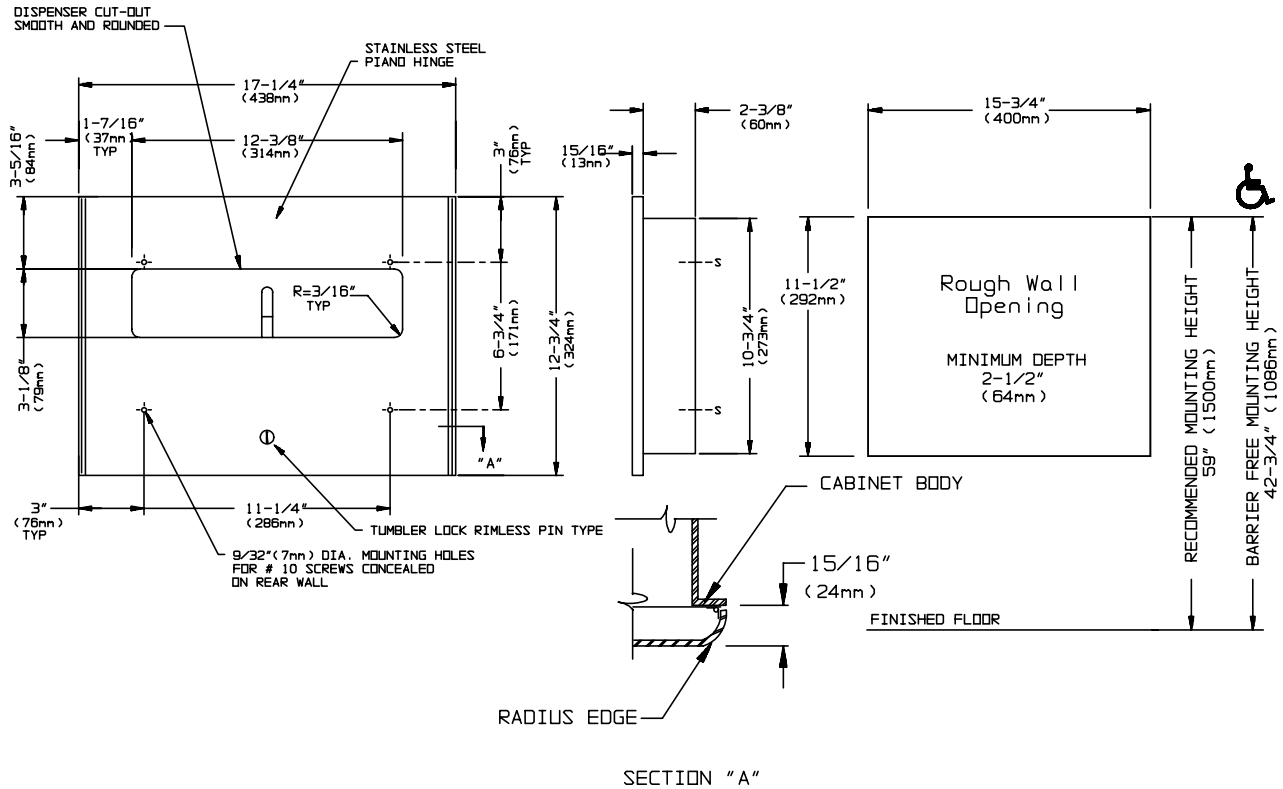
441 Saw Mill River Road, Yonkers, NY 10701 (914) 476-9000

MODEL No: 9477

ISSUED: 10-90

REVISED: 9-04

## RECESS MOUNTED TOILET SEAT COVER DISPENSER



### SPECIFICATION

Recess Mounted Toilet Seat Cover Dispenser shall hold and dispense 500 standard single or half-fold paper toilet seat covers contained in supply box. Cabinet and door shall be fabricated of alloy 18-8 stainless steel, type 304. Cabinet shall be 22 gauge, with a 1" (25mm) wide perimeter return to lay flat against wall. Full face door shall be 16 gauge and shall be free of miters, welding or open seams with 15/16" (24mm) square horizontal returns to wall and 3/4" rounded vertical edges. Door shall be attached to the edge of unit with a full length 3/16" (5mm) dia. stainless steel multi-staked piano hinge and shall be held closed with a rimless tumbler lock keyed alike to other ASI washroom equipment. Cover dispensing slot shall have a fully deburred flat edge for snag-free dispensing and user safety. Structural assembly of cabinet and door components shall be of welded construction and shall have no exposed fasteners or welded seams. All exposed surfaces shall have a N° 4 satin finish.

**Recess Mounted Toilet Seat Cover Dispenser shall be Model N° 9477 as manufactured by American Specialties, Inc., 441 Saw Mill River Road, Yonkers, New York 10701- 4913**

### INSTALLATION

Unit is mounted in wall recess using N° 10 self tapping screws (by others). Mounting holes are provided in side and rear walls of cabinet and are accessible through door for installation. For compliance with ADA Accessibility Guidelines, unit should be installed so that center line of dispenser slot is 40" (1016mm) maximum above finished floor (AFF). Typical installation height for general utility is 46" (1168mm) from bottom of trim AFF (46-3/4" <1187mm> to bottom edge RWO AFF).

**Rough Wall Opening (RWO) required is..... 15-3/4"W x 11-1/4"H x 2-5/8"D (400mm x 285mm x 67mm)**

### OPERATION

Covers are self-feeding until supply is depleted. Unit is manually reloaded with a full box through access door on a schedule determined by maintenance requirements.

Accessory Specialties

AMERICAN DISPENSER

Desert Ray Products

WATROUS INC.