



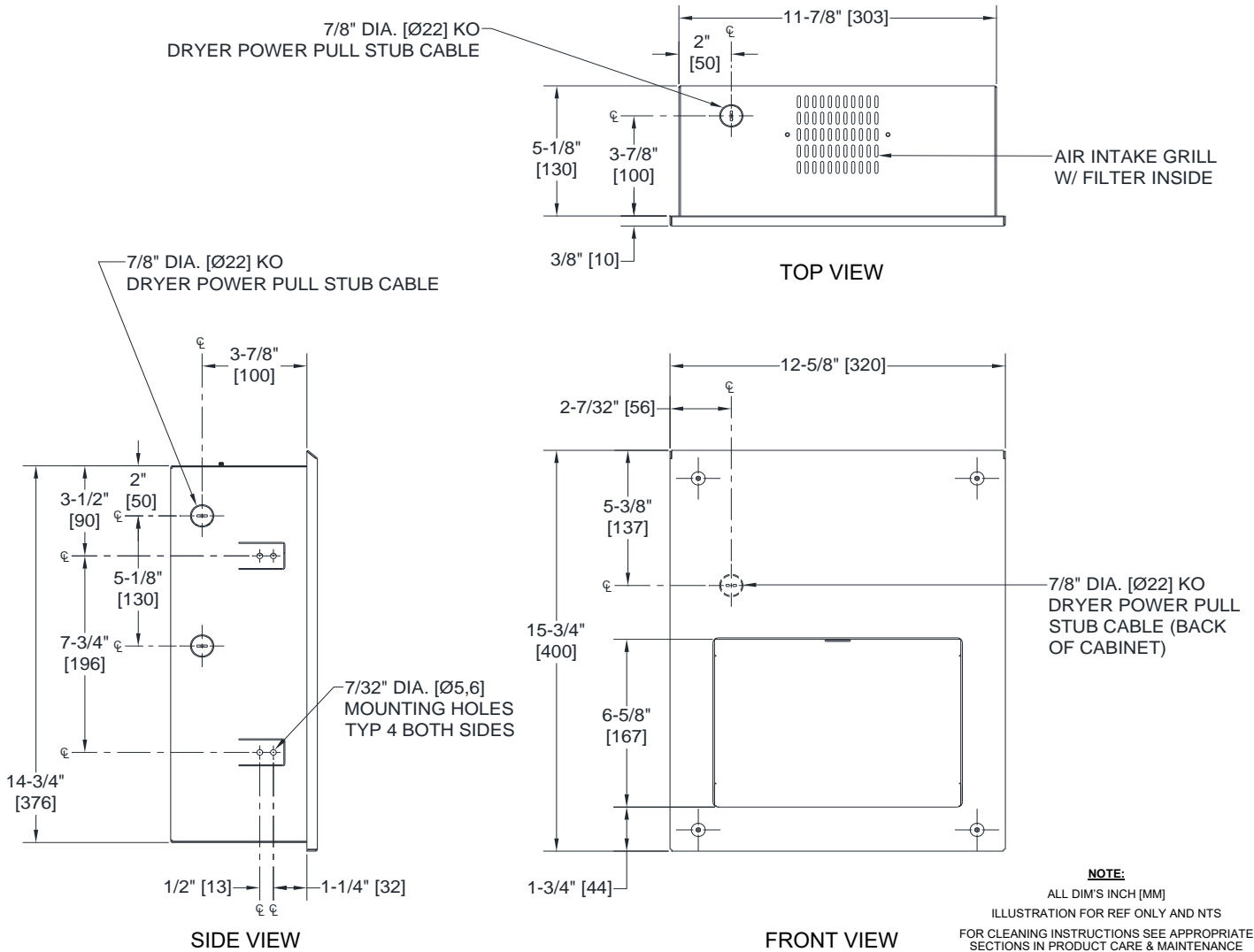
AMERICAN SPECIALTIES, INC.
 441 Saw Mill River Road, Yonkers, NY 10701
 (914) 476.9000 • (914) 476.0688
 www.americanspecialties.com

MODEL №: 0198-MH

ISSUED: 06-15

REVISED: 02 MAR 2020

SAFE-Dri™ - HIGH SPEED ANTI-LIGATURE HAND DRYER (Pg 1 of 2)



SPECIFICATION

SAFE-Dri™ - High Speed Anti-Ligature Hand Dryer for Anti-Ligature Security applications shall operate automatically from IR sensor that shall activate dryer when hands are placed in sensor zone. Air intake is concealed within wall up to open channel in plenum above. Cover and hand drying chamber shall be 18 gage type 304 stainless steel alloy 18-8. All exposed surfaces shall have satin finish and shall be protected during shipment by PVC film easily removable after installation. Cabinet shall be 20 gage corrosion protected steel with a 1/2" [13] wide perimeter trim to lay flush against wall and shall have flush pin-hex security screws to close cover. Motor and heating element shall have internal resetting automatic thermal protection. Fixed directional air vanes shall be heavy duty, rust proof and tamper resistant. Air intake slots shall not allow access to internal parts and are concealed behind cover inside wall. Circuitry shall have self-adjusting time-out and fail-safe off protection controlled by a microprocessor that shall detect and reject false signals and shall automatically self-calibrate to provide uniform sensitivity over its entire life span. Entire unit shall be internally electrically grounded. Dryer unit shall have approval and be listed under the re-examination services of Underwriters Laboratories, Inc. Unit shall be warranted against defects in materials or workmanship for five (5) years. Owner's Manual (OM) and Mounting Template Installation Guide (MT & IG) are supplied with unit.

SAFE-Dri™ - High Speed Anti-Ligature Hand Dryer shall be Model № 0198-MH-___{specify voltage suffix} of American Specialties, Inc., 441 Saw Mill River Road, Yonkers, NY 10701-4913



AMERICAN SPECIALTIES, INC.
 441 Saw Mill River Road, Yonkers, NY 10701
 (914) 476.9000 • (914) 476.0688
 www.americanspecialties.com

MODEL №: 0198-MH

ISSUED: 06-15

REVISED: 02 MAR 2020

SAFE-Dri™ - HIGH SPEED ANTI-LIGATURE HAND DRYER (Pg 2 of 2)

INSTALLATION

Mount unit cabinet in wall recess with four (4) № 10 [M5] screws (not supplied) into suitably prepared mountings (by others) or other suitable mounting hardware (by others) to suit wall conditions. For masonry walls use expansion bolts or anchors for 1/4" [M6] screws. See unit diagram for electrical service cable rough-in location. Electric service of 100-240VAC 20A 50/60 Hz (provided by others) is brought to rough wall opening (RWO) at location for dryer indicated on diagram above and is hooked up (by others) in accordance with schematic and Owner's Manual provided with unit. Electrical service is supplied and connected (by others) prior to installing cover. Cover is secured to cabinet with four (4) pin-hex socket flat-head security screws (supplied). For compliance with ICC/ANSI A-117.1 and 2010 ADA Accessibility Standards install unit with top of dryer hand chamber 48" [1219] max AFF (Above Finished Floor) if clear floor reach access is provided or 46" [1168] max AFF if side reach access over an obstruction (e.g. vanity) with reach depth greater than 10" [254] and less than 25" [635] is only provided or 44" [1118] max AFF if forward reach over an obstruction (e.g. commode) with reach depth greater than 20" [508] and less than 25" [635] is only provided. For general utility install unit so that top of dryer hand chamber is 44" to 50" [1118 to 1270] AFF. Note that top of RWO is 9/32" [7] below top of unit. For installation of two or more dryers, dryers should be no closer than 24" [610] on center. All installations require air intake channel (by others) above. See Owners Manual (OM) and Mounting Template (MT) supplied with unit.

RWO is 12-1/4" [311] W x 15-3/16" [386] H x 5-1/4" [133] D minimum with clear channel up to plenum for air intake

OPERATION

User activates dryer by placing hands under sensor. LED in sensor array shines blue light during operation to guide user to optimal hand placement for shorter drying time. Dryer automatically shuts off after time-out when user removes hands from sensor zone.

RATINGS

MODEL	TYPE	TIMING	SUPPLY	AMPS (MAX)	WATTS	IP	COLOR
0198-MH-1	Hand	Automatic	110-120 VAC 50/60 Hz	10.4	1000	IP21	Satin Finish; Vertical Grain; 304 Stainless Steel with security screws
0198-MH-2			208-240 VAC 50/60 Hz	5.2			

MOTOR	H/P	RPM x1000	FAN TYPE	AIR FLOW	HEATING ELEMENT	AIR OUTPUT TEMPERATURE	SOUND PRESSURE	DRYING TIME
Brush Type Dual Ball Bearings	0.67	29	Multi-Inlet Centrifugal	60 CFM (102 m ³ /h)	500 Watt with auto reset circuit breaker	131° F ± 5 [55° C ± 2.8] Ambient Room Temperature of 77° F [25° C]	66 dB-A @ 2M	Less Than 15 Seconds