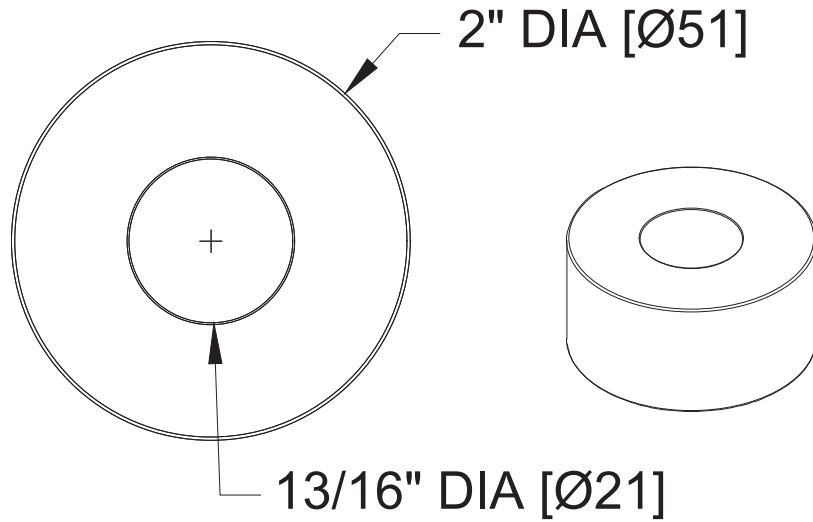
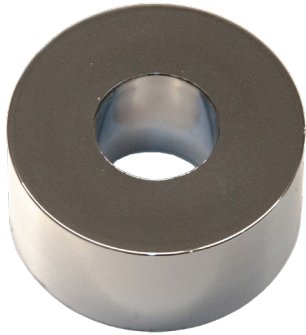


1" High Spacer for all Lav-Basin Soap Dispensers

Soap Dispensers

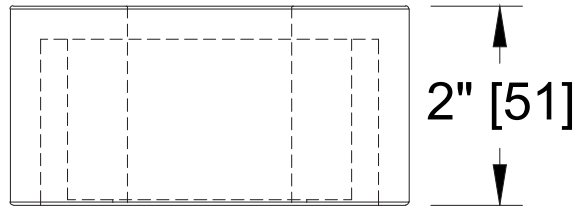
MasterFormat Section 10 28 13



Scan for Information



SUSTAINABILITY/LEED



NOTE:
ALL DIM'S INCH [MM]
ILLUSTRATION FOR REF ONLY AND NTS
SEE SOAP DISPENSER CARE & MAINTENANCE
DOCUMENT ONLINE FOR CLEANING

PRODUCT OVERVIEW

1" High Spacer for all Lav-Basin Soap Dispensers

KEY FEATURES & SPECIFICATIONS

- PART - Spacer for 0332 Series

OPERATION & MAINTENANCE

Dispense soap manually by pushing down on the spout stem. Dispense volume is typically 0.03 fl. oz. (0.8 ml) for liquid soap in correct viscosity range. Dispenser is refilled from above counter top by using the special refill key to unlock the escutcheon and remove the valve body with dip tube from the shank to expose reservoir opening. Pour soap directly into the opening until the level reaches the neck of the reservoir below the vanity.

TECHNICAL INFORMATION / PRODUCT PROPERTIES

Property	Value
Dimensions	1" [25]
Construction	N/A
Mounting	Replacement Part
Options	N/A

INSTALLATION

Unit is typically located adjacent to a flush mounted lavatory and installed through a 7/8" diameter [22 dia.] cut out (by others) in counter top. An adjustable threaded shank allows for installation in counter tops up to 3-1/2" [89] thick.

WARRANTY

One (1) Year from date of invoice