

**Soap Dispenser (Liquid and Antiseptic) – Surface Mounted**

*Soap Dispensers*

*MasterFormat Section 10 28 13*



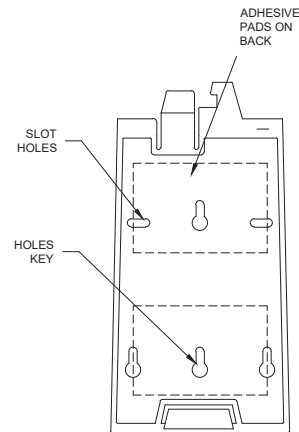
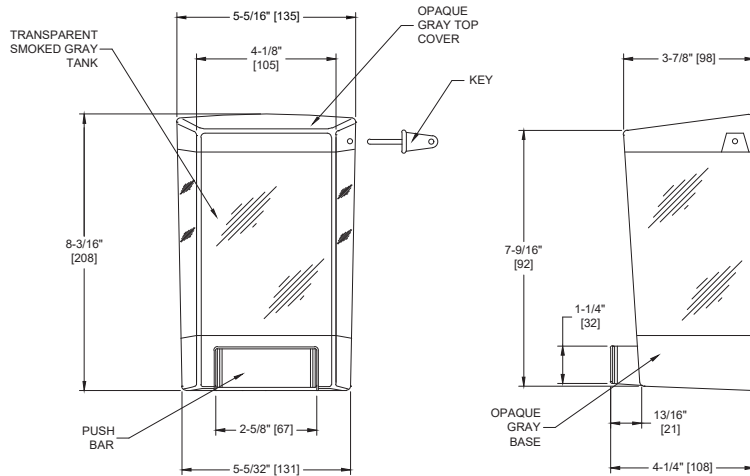
Scan for  
Information



**SUSTAINABILITY/LEED**

MR 4.1 (1) MR 6 (1) EQ 4.2 (1)

MR 4.2 (1) EQ 4.1 (1) EQ 4.4 (1)



**NOTE:**  
ALL DIM'S INCH [MM]  
ILLUSTRATION FOR REF ONLY AND NTS  
SEE SOAP DISPENSER CARE & MAINTENANCE  
DOCUMENT ONLINE FOR CLEANING

**PRODUCT OVERVIEW**

Dispenses up to 46 oz. (1.36 L) of a wide variety of antiseptic and liquid soaps, shampoos, lotions or detergents within the viscosity range of 100-3500 cP (mPa/s) and pH in the range of 5.5-8.5. Soaps containing reportable salts, chlorides and alcohols should be avoided. Unit does NOT dispense liquid material containing abrasives such as pumice. Fabricated of impact resistant ABS plastic with transparent smoked gray tank and opaque gray base, push bar and cover. Unit cover is sloped and has overlap edges to prevent top use as a shelf and to keep water spray out. Valve shall be constructed of concealed plastic body with stainless steel and plastic internal parts. Valve operation shall comply with 2010 ADA Accessibility Standards by requiring no more than 5 lbf (22.2 N) pressure to actuate and require no grasping or twisting by operator.

**KEY FEATURES & SPECIFICATIONS**

- Liquid and Anti Septic
- ABS Plastic Body
- Surface Mounted
- Manual Push Type
- Liquid Soap - 46 oz. (1.36 L) Capacity

**OPERATION & MAINTENANCE**

Soap is manually dispensed by depressing push bar. Unit is reloaded through tamper resistant top cover. Soap tank will continue to feed properly until empty. Tank supply is replenished manually on cycle determined by maintenance needs. Clear tank provides continuous view of soap level.

**TECHNICAL INFORMATION / PRODUCT PROPERTIES**

Property	Value
Dimensions	5-5/16" x 8-3/16" x 4-1/4" [135 x 208 x 108]
Construction	ABS Plastic
Mounting	Surface Mounted
Options	N/A

**INSTALLATION**

Unit is surface mounted to wall or partition by means of a bracket with two strips of adhesive tape (supplied) or mounting hardware (by others). Unit is secured to concealed bracket and locked in place by concealed snap latch. Recommended installation for general utility is for bottom of unit to be mounted at 42" [1066] Above Finished Floor or For compliance with 2010 ADA Accessibility Standards install unit with centerline of valve button no higher than 48" [1219] AFF.

**WARRANTY**

One (1) Year from date of Invoice