



AMERICAN SPECIALTIES, INC.
 441 Saw Mill River Road, Yonkers, NY 10701
 (914) 476.9000 • (914) 476.0688
 www.americanspecialties.com

MODEL №: 0357/0359 OM & IG

ISSUED: 21 MAY 2020

REVISED:

INSTALLATION AND MAINTENANCE INSTRUCTIONS FOR TANK TYPE FOAM DISPENSER

INSTALLATION

STEP-1: Locate position on wall where dispenser is to be located. Recommended mounting height for general utility is 42" [1067] AFF or 6" [152] minimum above washbasin to bottom of unit. Recommended horizontal position of valve is 6" [152] left or right of lavatory centerline. Allow 4" [102] minimum clearance above unit for filling. **NOTE:** The top edge of dispenser is approximately 3/8" [10] to 1/2" [13] above top edge of wall plate.

STEP-2: Mount wall plate in vertical position **WITH WIDE PART of "V" at TOP.** Use fiber plugs for tile and marble walls. For plaster or hollow walls, use toggle bolts or expansion bolts.

STEP-3: Unlock the filler door on top of tank by using the special service key furnished.

STEP-4: LOOSEN SCREW inside tank (see step 5) and slide dispenser into the V wall plate so that plate edges on back of tank catch inside of wall plate. **PRESS TANK DOWN FIRMLY.**

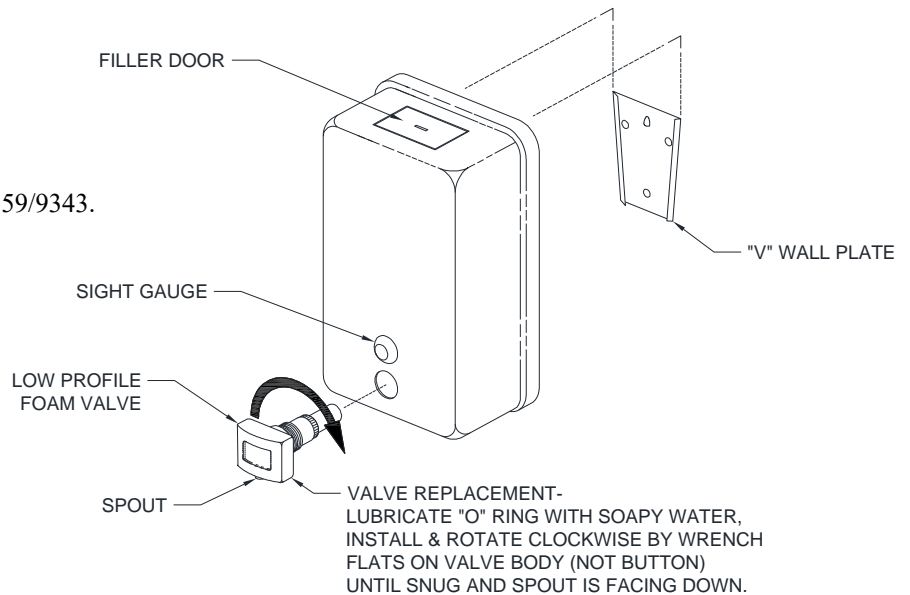
STEP-5: Insert screwdriver **THROUGH** the filler door from front of tank. Engage the Phillips screw head (located in center of tank back 1" [25] down from top) and tighten screw securely. This will lock the tank onto the wall plate. (The washer under the screw head prevents Leakage - therefore make sure this screw is tightened well.)

STEP-6: Fill the dispenser with a foam soap to a level 1/4" [6] below mounting screw. The foaming liquid soap should be within the viscosity range of 1 to 100 cP [mPa*s] and in the pH range of 7 ± 1.5.

REPLACEMENT PARTS AVAILABLE

<u>PART №</u>	<u>DESCRIPTION</u>
001	Sight gauge.
V40-9	"O" Ring for Sight Gauge.
L-28	Filling Key for 0345/0347/0357/0359/9343.

0359 SHOW FOR REFERENCE
 0357 SIMILAR



MAINTENANCE

All of our products are designed and manufactured to high quality standards to ensure many years of satisfactory service. To assure long life and beauty, the product should be cleaned, protected and maintained.

Under normal usage, stainless steel products require regular cleaning with a soft clean rag moistened with a mild detergent followed by a water moistened clean rag and then a dry rag, much the same as stainless steel sinks, pot & pans and eating utensils. The finish can be wiped with lemon oil applied by soft polishing cloth to maintain sheen.

The 0357 and 0359 satin-finished stainless steel should be protected against Muriatic acid and caustic or abrasive materials, and harsh cleaning detergents [with pH outside the range 7 ± 1.5]. In the event such agents cause discoloration, polish with a stainless steel cleaner such as 3M Stainless Steel Cleaner & Polish[®] and a 3M Scotch Brite[®] pad. Either a blue (less aggressive) or green (more aggressive) pad is recommended.