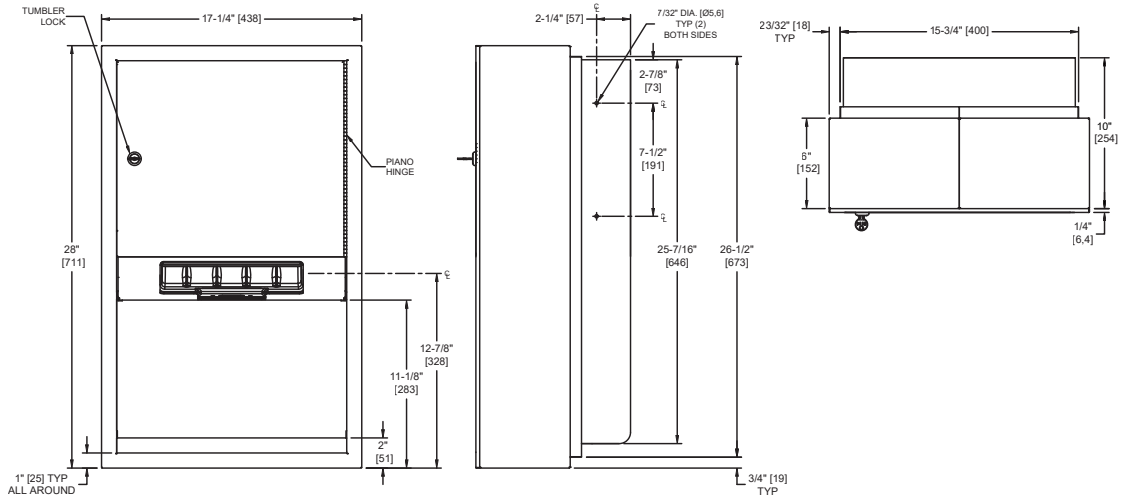


**Traditional™ - Auto Paper Towel Dispenser - Roll - Battery Operated - Semi-Recessed**

Paper Towel Dispensers

Traditional

MasterFormat Section 10 28 13



Scan for Information



**SUSTAINABILITY/LEED**

MR 4.1 (1) MR 6 (1) EQ 4.2 (1)  
MR 4.2 (1) EQ 4.1 (1) EQ 4.4 (1)

**NOTE:**  
ALL DIM'S INCH [MM]  
ILLUSTRATION FOR REF ONLY AND NTS  
FOR CLEANING INSTRUCTIONS SEE APPROPRIATE SECTIONS IN  
PRODUCT CARE & MAINTENANCE BULLETIN (PCM) ON ASI WEBSITE

**PRODUCT OVERVIEW**

Proximity sensing no-touch unit dispenses a pre-set length per cycle from 8" [205] or 9" [230] wide standard towel roll up to 800 ft. (244m) long and has stub roll capability for continuous dispensing. Cabinet and frame shall be fabricated of 22 & 20 gage type 304 stainless steel alloy 18-8, and towel dispenser door shall be 18 gage same grade. Powered by 4 D-size batteries (not included) and operates automatically to activate towel dispensing when hands are placed in sensor zone.

**KEY FEATURES & SPECIFICATIONS**

- "Touch Free" dispensing for better hygiene
- Owner controlled adjustable paper feed length
- Type 304 Stainless Steel - Satin Finish
- Semi-Recessed - w/ -6 collar
- Automatic - Battery Operated - "No Touch"
- Roll Towels - up to 800 ft. Length

**OPERATION & MAINTENANCE**

Towels are dispensed one length at a time automatically when hands are placed in sensor zone until supply is depleted. Owner predetermines length of towel dispensed by making selections on three (3) three-position switches for length, delay, and economy. Unit may be reloaded with a full roll to automatically start when finished with an existing partial roll and will continue to feed properly when reloaded with a full roll and partial roll is transferred to stub roll position. Refill dispenser by unlocking door and replacing towel roll for an empty or partially empty unit. Dispenser supply is replenished and batteries are replaced manually on cycles determined by maintenance needs. LED indicates sensing and battery condition. Locking door prevents unauthorized access and roll removal.

**TECHNICAL INFORMATION / PRODUCT PROPERTIES**

Property	Value
Dimensions	17-1/4" [438] W x 28" [711] H x 10" [254]
Construction	Type 304 Stainless Steel - Satin Finish Heavy duty stainless steel piano hinge
Power	Batteries: Four (4) D-size
Operation	Automatic - Battery Operated - "No Touch"
Mounting	Semi-Recessed with 6" collar
Capacity	Roll Towels - up to 800 ft. Length

**INSTALLATION**

Provide adequate in-wall reinforcement (by others) in drywall construction to hold mounted unit in service after wall is finished. Provide appropriate anchors (by others) to suit wall and field conditions for installation into walls other than new drywall. Mount unit in wall recess using #10 self-threading screws (by others) through concealed mounting holes provided. Note that top of RWO is 7/8" [22] below top of unit. Power is supplied by code approved cable or conduit (by others) to RWO at any one of three [3] available locations indicated on diagram and terminated in utility duplex outlet box (provided) inside cabinet. For compliance with 2010 ADA Accessibility Standards, 2015 ABA Standards and ICC/ANSI A-117.1 install unit so that top of towel dispenser opening is 48" [1219] maximum Above Finished Floor (AFF). Be advised that local codes may require mounting so that top of towel dispenser opening is 40" [1016] maximum AFF (e.g. California UBC/Title 24). For general utility install unit with top of towel dispenser opening between 49" [1245] and 56" [1422] AFF.

Rough Wall Opening (RWO) required is 16" [406] W x 26-5/8" [676] H x 4" [260] D Min

**WARRANTY**

One (1) Year from date of Invoice