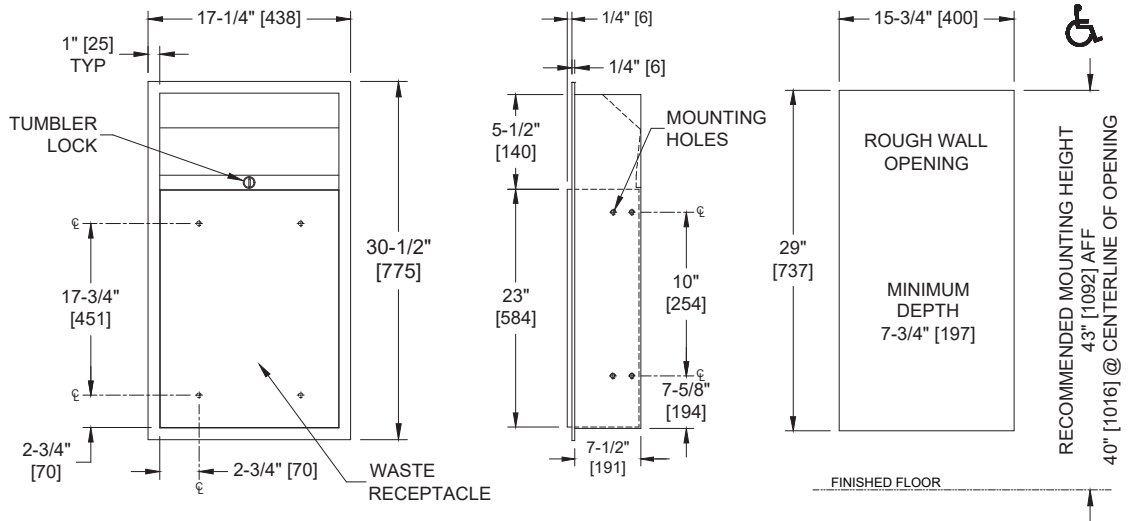


Waste Receptacle (1/2" proj., 7-1/2" rec.) – Semi-Recessed, 12 Gallons

Waste Receptacles

MasterFormat Section 10 28 13



Scan for Information



SUSTAINABILITY/LEED

MR 4.1 (1) MR 6 (1) EQ 4.2 (1)
MR 4.2 (1) EQ 4.1 (1) EQ 4.4 (1)

NOTE:
ALL DIM'S INCH [MM]
ILLUSTRATION FOR REF ONLY AND NTS

PRODUCT OVERVIEW

Semi-Recessed Waste Receptacle has a capacity of 12 gal (46 liters). Frame, waste receptacle and cabinet are fabricated of 22 gauge stainless steel alloy 18-8, type 304. Waste receptacle has hemmed edges for safety and internal hooks for hanging a reusable vinyl bag (optional, by others). A tumbler lock keyed alike to other ASI washroom equipment shall retain waste receptacle. Container locks into cabinet, removable for servicing.

KEY FEATURES & SPECIFICATIONS

- Waste Receptacle has hemmed edges for safety
- Type 304 Stainless Steel - Satin Finish
- Semi-Recessed - 1/2" [13] Projection Standard
- 12.0 Gal. (45.4 L) Waste Capacity Standard

OPERATION & MAINTENANCE

Waste receptacle is emptied manually on cycle determined by maintenance requirements. Optional reusable liner bags (by others) may be purchased to hang on internal hooks or disposable bags (by others) may be draped over rim and held in place when receptacle is locked into cabinet. Keyed tumbler lock prevents unauthorized removal.

TECHNICAL INFORMATION / PRODUCT PROPERTIES

Property	Value
Dimensions	17-1/4" [438] W x 30-1/2" [775] H x 8" [203] D
Construction	Type 304 Stainless Steel - Satin Finish
Mounting	Semi-Recessed - 1/2" [13] Projection Standard
Capacity	12.0 Gal. (45.4 L) Waste Capacity Standard

INSTALLATION

Mount unit in wall recess using # 10 self-threading screws (by others) through concealed mounting holes provided. Note that top of Rough Wall Opening (RWO) is 3/4" [19] below top of unit.

Rough Wall Opening (RWO) required is 15-3/4" [400] W x 29" [737] H x 7-3/4" [197] D minimum

OPTIONS

N/A

WARRANTY

One (1) Year from date of Invoice