

Roll Paper Towel Dispenser & Waste Receptacle – Surface Mounted

Paper Towel Combination Units

Traditional

MasterFormat Section 10 28 13

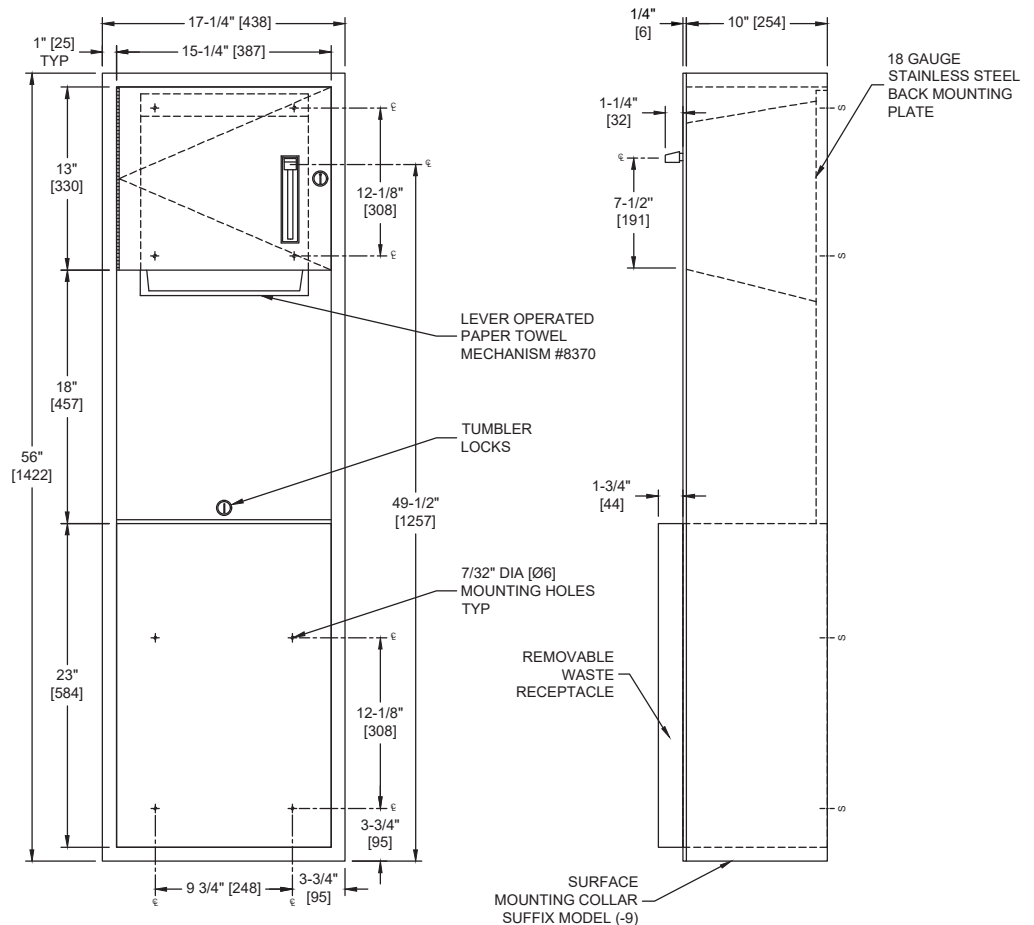


Scan for
Information



SUSTAINABILITY/LEED

MR 4.1 (1) EQ 4.1 (1)
MR 4.2 (1) EQ 4.2 (1)
MR 6 (1) EQ 4.4 (1)



PRODUCT OVERVIEW

Unit mechanically dispenses 8" [205] or 9" [230] wide standard towel roll up to 800 ft. (244m) long and has stub roll capability for continuous dispensing. 18 gal. (68 liters) disposal capacity. Surface mounted with stainless steel collar. Towels are fed by lever action until supply is depleted. Towel feed length is adjustable for economy by pin (supplied) limiting of lever stroke length. Unit may be reloaded with a full roll to automatically start when finished with an existing partial roll. Locking compartment and receptacle retainer prevents unauthorized access or removal.

KEY FEATURES & SPECIFICATIONS

- Double-pan construction door has "no-Flex" fiberboard filler for added rigidity and strength
- Door is attached to the cabinet with a 3/16" diameter [Ø5] Heavy-duty, Multi-Staked Stainless Steel Piano Hinge
- Type 304 Stainless Steel - Satin Finish
- Surface Mounted - w/ 9" Collar
- Roll Towels - up to 800 ft. Length / 18.0 Gal. (68.0 L) Waste Capacity

OPERATION & MAINTENANCE

Towels are fed by lever action until supply is depleted. Towel feed length is adjustable for economy by pin (supplied) limiting of lever stroke length. Unit may be reloaded with a full roll to automatically start when finished with an existing partial roll. Waste container is emptied manually on cycle determined by maintenance needs. Locking compartment and receptacle retainer prevents unauthorized access and removal.

TECHNICAL INFORMATION / PRODUCT PROPERTIES

| Property | Value |
|--------------|--|
| Dimensions | 17-1/4" [438] W x 56" [1422] H x 11-3/4" [299] D |
| Construction | Type 304 Stainless Steel - Satin Finish |
| Mounting | Surface Mounted - w/ -9 Collar |
| Capacity | Roll Towels - up to 800 ft. Length / 18.0 Gal. (68.0 L) Waste Capacity |

INSTALLATION

Install unit on wall using four (4) #10 self-threading screws (by others) through concealed mounting holes provided. Suggested mounting height is 55" [1397] Above Finished Floor (AFF) to lever handle. For reduced height compliance with 6" [152] curb and compliance with 2010 ADA Accessibility Standards see Model #0463 or #046921 series.

WARRANTY

One (1) Year from date of Invoice