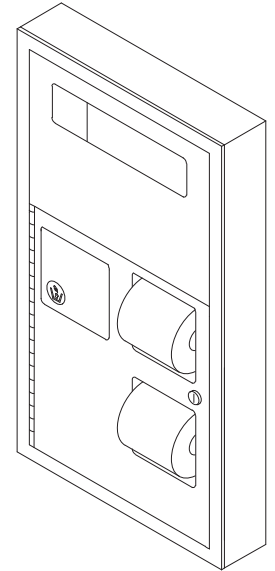
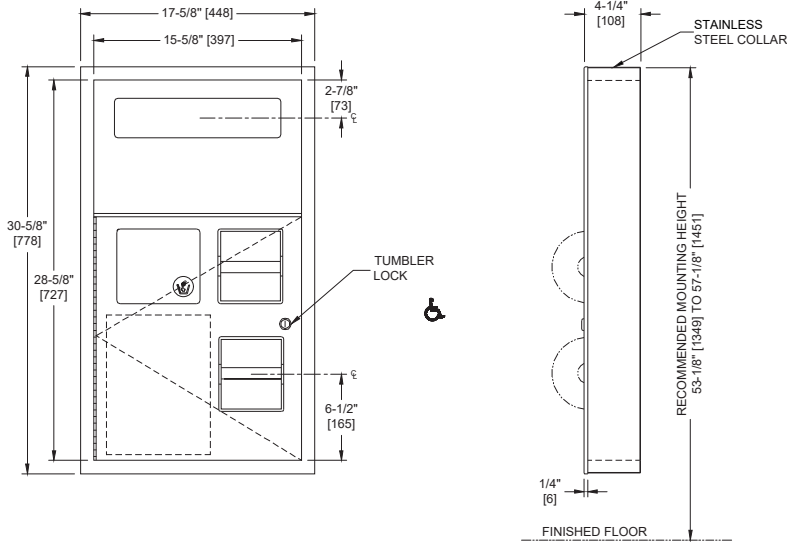


Toilet Seat Cover & Toilet Tissue Dispenser w/ Napkin Disposal & Collar for Surface Mounting

Specialty Accessories

Traditional

MasterFormat Section 10 28 13



Scan for Information



SUSTAINABILITY/LEED

MR 4.1 (1) MR 6 (1) EQ 4.2 (1)
MR 4.2 (1) EQ 4.1 (1) EQ 4.4 (1)

NOTE:
ALL DIM'S INCH [MM]
ILLUSTRATION FOR REF ONLY AND NTS

PRODUCT OVERVIEW

Holds and dispenses 1000 paper seat covers and two (2) rolls standard or 1800 sheet 4-1/2" [114] x 5-1/4" [133] diameter toilet paper. Waste capacity of 1.3 gal [4.9 liters] or 300 cubic inches [.005m3]. Includes stainless steel collar for surface mounting. Toilet paper dispenser/disposal door is held closed with a tumbler lock. Cabinet includes theft and vandal resistant rollers molded of high-impact resistant plastic with integral molded-in stainless steel endpins and two (2) rollers [p/n R-004] (supplied).

KEY FEATURES & SPECIFICATIONS

- Combination Unit
- 18 Gauge Door
- Type 304 Stainless Steel - Satin Finish
- Multi-staked piano hinge
- Surface Mounted
- 1,000 seat covers / 2 Tissue Rolls / 1.3 gal (4.9 L) Waste Capacity

OPERATION & MAINTENANCE

Push self-closing disposal door to deposit waste material. Seat covers are self-feeding until supply is depleted. Toilet paper rolls feed freely until depleted and level of supply is constantly visible for low-level warning. Waste receptacle is emptied manually on cycle determined by maintenance needs. Toilet paper rolls, paper seat covers and waste receptacle are serviced by unlocking and opening door. Locked door prevents inadvertent dumping and unauthorized removal. Waste container safety-edged finger hole provides convenient grip for service. Toilet paper spindles are carried in vandal resistant sub-frame accessible when door is opened.

TECHNICAL INFORMATION / PRODUCT PROPERTIES

Property	Value
Dimensions	17-5/8" x 30-5/8" x 4-1/4" [448 x 778 x 107]
Construction	Type 304 Stainless Steel - Satin Finish 18 gauge Door with Multi-staked piano hinge
Mounting	Surface Mounted
Capacity	1,000 seat covers / 2 Tissue Rolls / 1.3 gal (4.9 L) Waste Capacity

INSTALLATION

Slide a stainless steel collar over the rear of cabinet and then surface mount cabinet to partition or wall using #10 self-threading screws (by others) through concealed mounting holes provided.

ADDITIONAL INFORMATION
WARRANTY

One (1) Year from date of Invoice