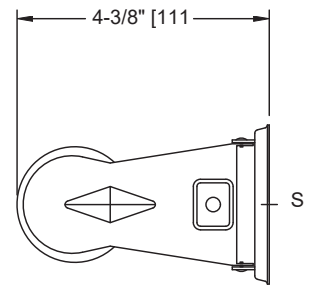
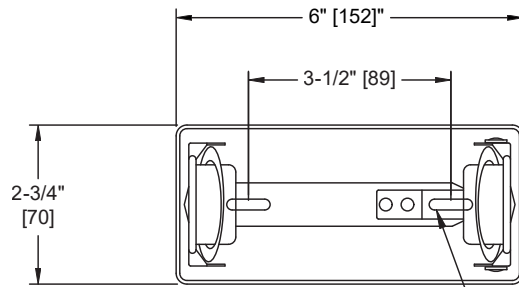
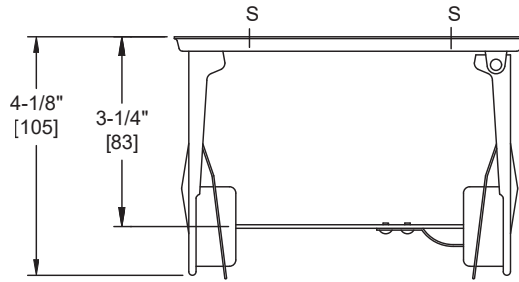


**Toilet Tissue Holder (Single) – Surface Mounted**

Toilet Tissue Dispensers

MasterFormat Section 10 28 13



3/4" [19] x 3/16" [5]  
SLOT MOUNTING HOLES

**NOTE:**  
ALL DIM'S INCH [MM]  
ILLUSTRATION FOR REF ONLY AND NTS

Scan for Information



**SUSTAINABILITY/LEED**

MR 4.1 (1) MR 6 (1) EQ 4.2 (1)  
MR 4.2 (1) EQ 4.1 (1) EQ 4.4 (1)

**PRODUCT OVERVIEW**

Holds one (1) roll of standard core roll toilet paper up to 5" diameter [Ø127]. Finish is high-polished chrome-plated steel. Roll shall be non-removable until roll is depleted. Brake springs shall allow free delivery for each roll of toilet paper while preventing over-spin paper roll-off due to fast-pull. Roll core prevents access to the release catch and must be removed to allow the end support arm to swing away for service roll replacement. Toilet paper is replaced on a cycle determined by maintenance needs.

**KEY FEATURES & SPECIFICATIONS**

- Single Roll Dispenser
- 18 Gauge Chrome Plated Steel with High Polish
- Surface Mounted

**OPERATION & MAINTENANCE**

Toilet paper is dispensed with free delivery while preventing over-spin from fast-pull. Roll core prevents access to the release catch and must be removed to allow the end support arm to swing away for service roll replacement. Toilet paper is replaced on a cycle determined by maintenance needs.

**TECHNICAL INFORMATION / PRODUCT PROPERTIES**

Property	Value
Dimensions	6" [152] W x 2-3/4" [70] H x 4-1/4" [108] D
Construction	18 Gauge Chrome Plated Steel with High Polish
Mounting	Surface Mounted
Capacity	Holds one (1) roll of standard core roll toilet paper up to 5" Dia. [Ø127]

**INSTALLATION**

For general utility mount unit 32" [813] AFF (Above Finished Floor) from center line of holder. Surface mount holder to wall with two (2) #10 self-threading screws (by others) through mounting slots provided in back plate. For compliance with 2010 ADA Accessibility Standards and 2015 ABA Standards install unit so that center line of roll is 7" [178] min to 9" [229] max in front of toilet and axis of roll is 15" [381] min AFF to 48" [1219] max AFF.

**OPTIONS**
**WARRANTY**

One (1) Year from date of Invoice