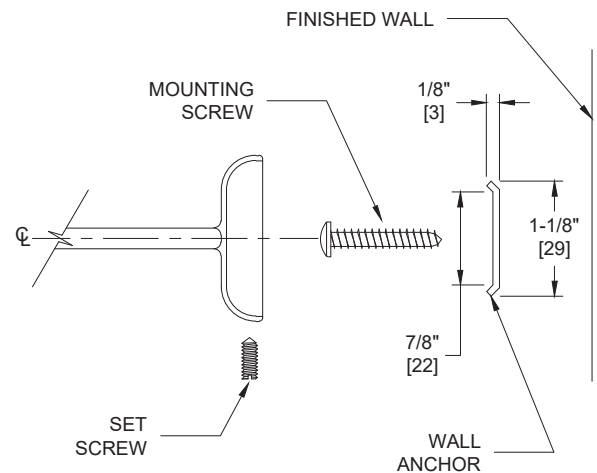
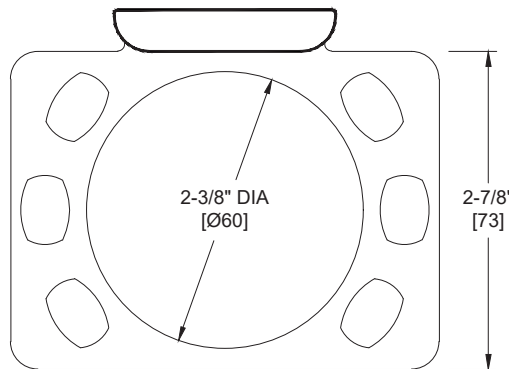
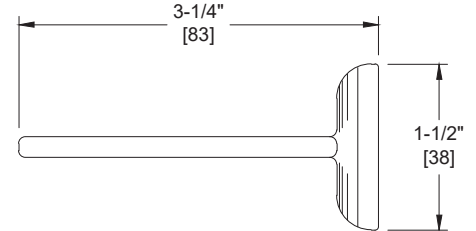
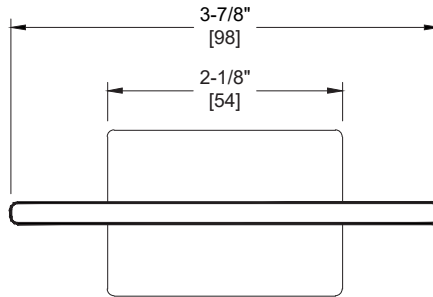


Toothbrush & Tumbler Holder – Surface Mounted, Chrome Plated Zamak

Specialty Accessories

MasterFormat Section 10 28 13



NOTE:
ALL DIM'S INCH [MM]
ILLUSTRATION FOR REF ONLY AND NTS

Scan for
Information



SUSTAINABILITY/LEED

PRODUCT OVERVIEW

Fabricated from triple chrome-plated rust resistant Zamak. One stainless steel hex socket set screws is provided along perimeter of flange for anchoring to stainless steel wall bracket. Mounting hardware also provided.

KEY FEATURES & SPECIFICATIONS

- Chrome Plated Zamak
- Surface Mounted

OPERATION & MAINTENANCE

Washroom accessory products require regular surface cleaning, much the same as stainless steel sinks, pots and pans, and eating utensils. As long as a regular cleaning schedule is followed, the best method is cleaning with a soft clean rag moistened with a mild detergent, followed by a water-moistened clean rag and then a dry rag.

TECHNICAL INFORMATION / PRODUCT PROPERTIES

Property	Value
Dimensions	3-7/8" [98] W x 1-1/2" [38] H x 3-1/4" [83] D
Construction	Chrome Plated Zamac
Mounting	Surface Mounted
Capacity	

INSTALLATION

Wall bracket is surface mounted using self-threading screws (supplied) through holes provided. Tumbler/Toothbrush Holder is mounted over top leg of bracket and secured by set screw from underside. Suggested location is 52" [1321] Above Finished Floor (AFF) to centerline of wall bracket or 6" [152] above wash basin.

ADDITIONAL INFORMATION

N/A

WARRANTY

One (1) Year from date of Invoice