



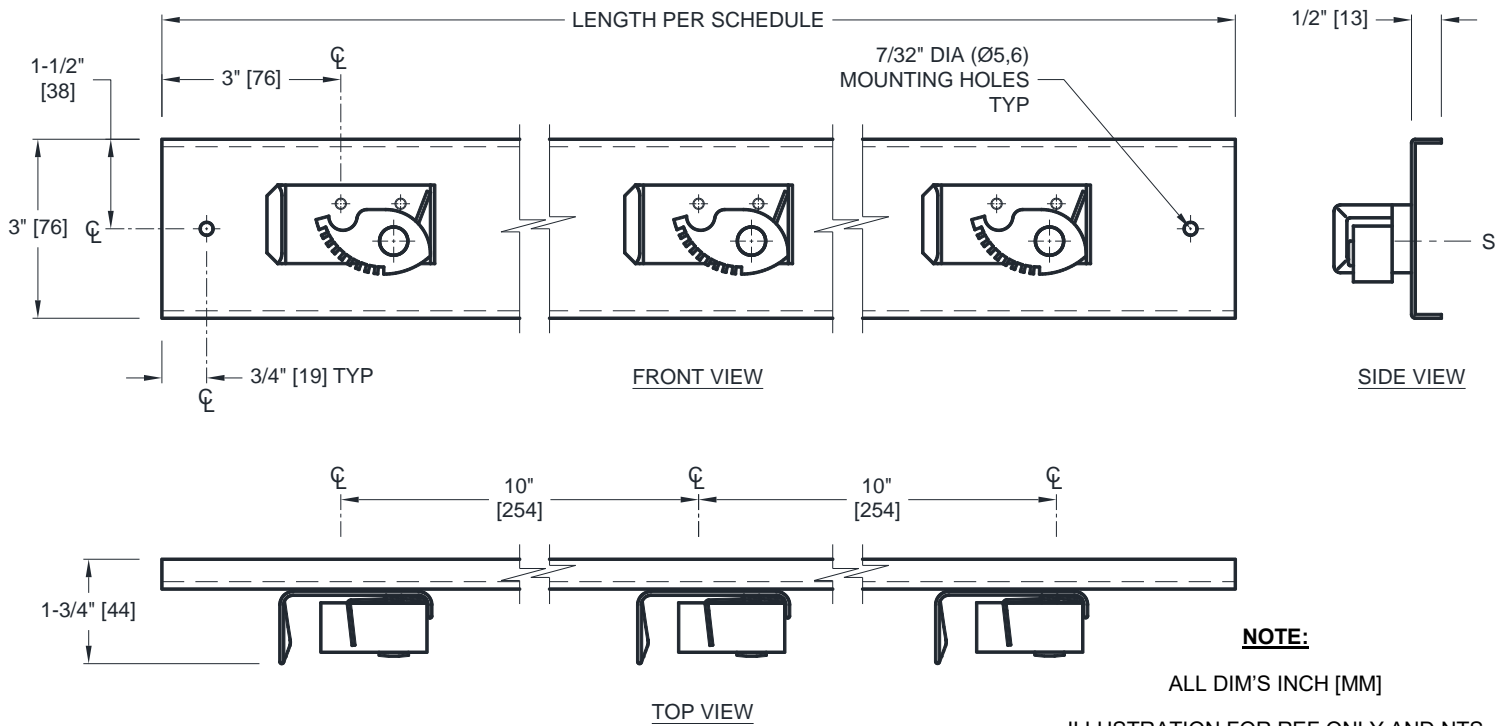
**AMERICAN SPECIALTIES, INC.**  
 441 Saw Mill River Road, Yonkers, NY 10701  
 (914) 476.9000 • (914) 476.0688  
 www.americanspecialties.com

**MODEL №:** 0796

**ISSUED:** 01-87

**REVISED:** 09 APR 2019

**MOP HOLDER RACK**



SCHEDULE OF AVAILABILITY			
Model №:	Length	Mop Holder Qty	Qty
0796-3	26" [660]	3	
0796-4	36" [914]	4	

**SPECIFICATION**

Mop Holder Rack shall be one-piece 20 gauge type 304 stainless steel alloy 18-8 with satin finish channel. Horizontal edges of channel shall return 1/2" [13] to wall. Mop holder brackets shall be fabricated of cadmium plated steel and shall be ribbed for rigidity. Each mop holder shall have a pivoting spring loaded serrated rubber cam that shall hold round handles of 7/8" to 1-1/4" diameter [Ø22 to Ø32] wedged against ribbed clamp plate. Number of mop holders and length of unit shall be as specified in standard schedule.

**Mop Holder Rack shall be Model № 0796-3 (or 0796-4) as manufactured by American Specialties, Inc., 441 Saw Mill River Road, Yonkers, New York 10701-4913**

**INSTALLATION**

For general utility mount rack 70" [1778] above finished floor (AFF) from bottom of rack with № 10 pan head self-threading screws (by others) through holes provided in channel. For compliance with 2010 ADA Accessibility Standards, install unit so that top of rack is 48" [1219] maximum AFF if clear floor access is provided.

**OPERATION**

Mop or broom handle is pushed into grip-jaw of pivoting serrated rubber cam with upward motion until it seats behind rib on clamp plate. Spring holds cam against handle. Gravity holds mop clamped in position.