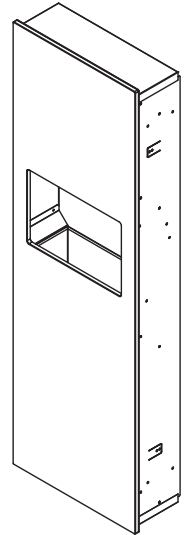
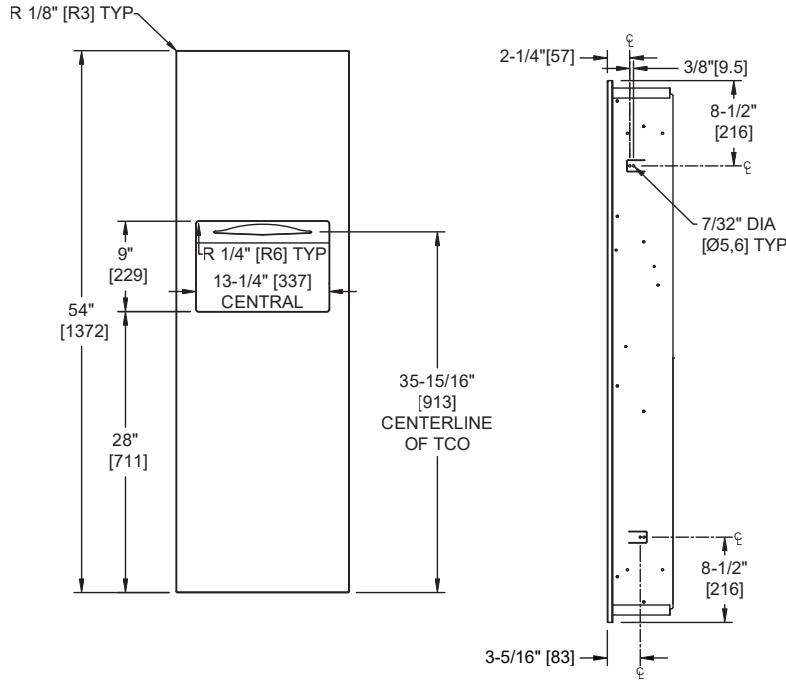


**Piatto™ Completely Recessed Paper Towel Dispenser & Waste Receptacle – White Phenolic Door**

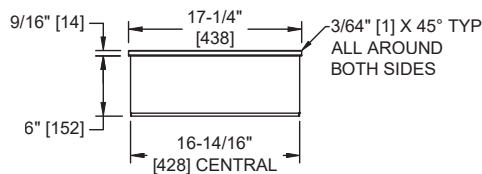
Paper Towel Combination Units

Piatto

MasterFormat Section 10 28 13



Scan for Information



**SUSTAINABILITY/LEED**

MR 4.1 (1) EQ 4.1 (1)  
MR 4.2 (1) EQ 4.2 (1)  
MR 6 (1) EQ 4.4 (1)

**NOTE:**  
ALL DIM'S INCH [MM]  
ILLUSTRATION FOR REF ONLY AND NTS  
FOR CLEANING INSTRUCTIONS SEE APPROPRIATE SECTIONS IN  
PRODUCT CARE & MAINTENANCE BULLETIN (PCM) ON ASI WEBSITE

**PRODUCT OVERVIEW**

This sophisticated combination paper towel and waste receptacle cabinet is designed to be completely recessed into the plane of the washroom wall, highlighting the seamless design that defines Piatto™. The phenolic door is attached to the cabinet using field-adjustable, furniture quality hinges and is secured shut by an internal spring-loaded latch. All hardware is concealed giving the Piatto™ Collection its minimalist appeal. Dispenses 600 C-fold, 800 multi-fold, or 1,100 standard single-fold towels (with provided adapter). 9 gal. (34 L) stainless steel waste receptacle. Rolled edged finger hole allows for easy servicing and removal. Paper towels are manually withdrawn through dispensing slot. An adjustable towel adapter ensures that towels feed properly until depleted. Unit will continue to feed properly when reloaded with a partial load in place. Refill dispenser by unlatching door and replacing towels for an empty or partially empty unit. Door is White Formica 949.

**KEY FEATURES & SPECIFICATIONS**

- Seamless construction, crisp lines and minimalistic design
- Concealed multi-staked hinge - 3/16" diameter [Ø5]
- 20 gauge Type 304 Stainless Steel - Satin Finish
- Recessed
- Comes with adapter to change capacity to up to 1,100 single-fold paper towels.
- 800 Multi-Fold or or 600 C-Fold towels / 9.0 Gal. (34.0 L) Waste Capacity, standard

**OPERATION & MAINTENANCE**

Towels are self-feeding until supply is depleted. An adjustable towel adapter ensures that towels feed properly until depleted. Unit may be reloaded with a partial load in-place and will continue to feed properly. Refill dispenser by unlocking door and replacing towels for an empty or partially empty unit. Dispenser supply is replenished and waste container is emptied manually on cycles determined by maintenance needs.

**TECHNICAL INFORMATION / PRODUCT PROPERTIES**

Property	Value
Dimensions	17-1/4" [438] W x 54" [1372] H x 6-9/16" [166] D
Construction	Type 304 Stainless Steel Frame w/ White Phenolic Door Furniture style hinges are field adjustable to ensure perfect fit
Mounting	Concealed Mounting
Capacity	Fits with virtually no gap into a finished wall opening

**INSTALLATION**

Mount unit in wall recess using four (4) #10 x 1-1/2" [M5x38] self-threading Pan Head screws (by others) through concealed mounting holes provided in Shim-less adjustable mounting tabs. For compliance with 2010 ADA Accessibility Standards mount unit with centerline of towel outlet 48" [1219] maximum Above Finish Floor (AFF). For general utility mount unit 20" [508] AFF to bottom of unit. See OM & IG for complete installation instructions packed with unit.

Finished Wall Opening (FWO) required is 17-5/16" [440] W x 54-1/16" [1373] H x 6-11/16" [170] D minimum

**WARRANTY**

One (1) Year from date of Invoice