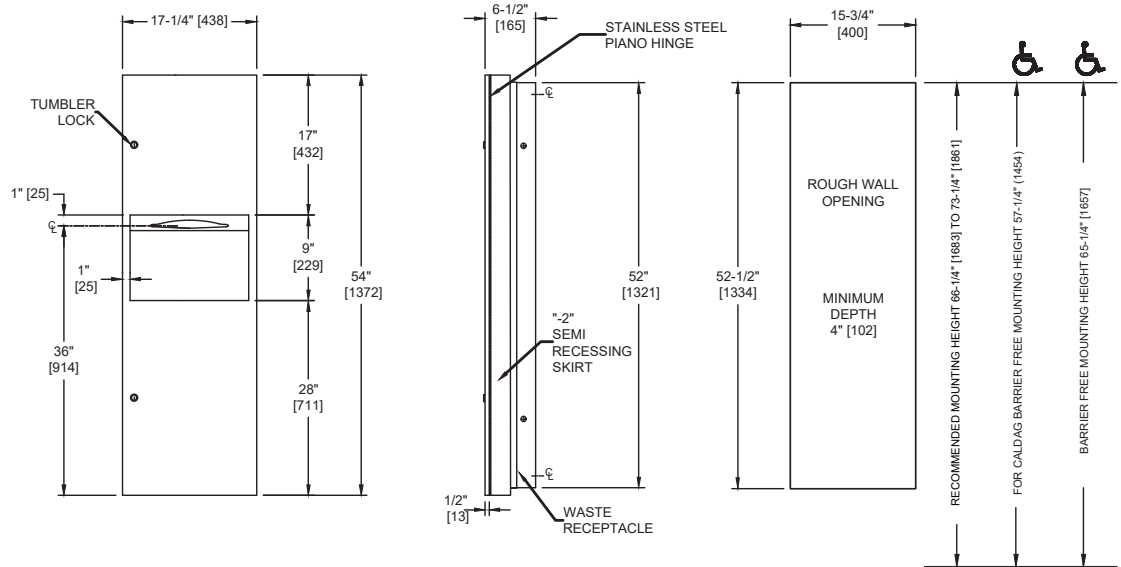


**Simplicity Collection Paper Towel Dispenser & Waste Receptacle – Semi-Recessed**

Paper Towel Combination Units

Simplicity

MasterFormat Section 10 28 13



Scan for Information



**SUSTAINABILITY/LEED**

MR 4.1 (1) EQ 4.1 (1)  
MR 4.2 (1) EQ 4.2 (1)  
MR 6 (1) EQ 4.4 (1)

**NOTE:**  
ALL DIM'S INCH [MM]  
ILLUSTRATION FOR REF ONLY AND NTS  
FOR CLEANING INSTRUCTIONS SEE APPROPRIATE SECTIONS IN  
PRODUCT CARE & MAINTENANCE BULLETIN (PCM) ON ASI WEBSITE

**PRODUCT OVERVIEW**

Dispenses 800 multi-fold, or 600 C-fold towels, standard. Provided adapter allows the flexibility to change the capacity to up to 1,100 single-fold paper towels. 9 gal. (34 L) stainless steel waste receptacle. Semi-recessed with 2" stainless steel collar. Towels are self-feeding until supply is depleted. Unit will continue to feed properly when reloaded with a partial load in place. Locked door prevents unauthorized access or removal.

**KEY FEATURES & SPECIFICATIONS**

- Seamless construction, crisp lines and minimalistic design
- Concealed multi-staked hinge - 3/16" diameter [Ø5]
- Type 304 Stainless Steel - Satin Finish
- Door 18 guage Cabinet 20 guage
- Semi-Recessed - w/ 2" collar
- Comes with adapter to change capacity to up to 1,100 single-fold paper towels.
- 800 Multi-Fold or or 600 C-Fold towels / 9.0 Gal. (34.0 L) Waste Capacity, standard

**OPERATION & MAINTENANCE**

Towels are self-feeding until supply is depleted. Unit will continue to feed properly when reloaded with a partial load in place. Waste receptacle is emptied manually on a cycle determined by maintenance needs. Locked door prevents unauthorized access or removal.

**TECHNICAL INFORMATION / PRODUCT PROPERTIES**

Property	Value
Dimensions	17-1/4" [438] W x 54" [1372] H x 6-1/2" [165] D
Construction	Type 304 Stainless Steel - Satin Finish Concealed multi-staked hinge - 3/16" diameter [Ø5]
Mounting	Semi-Recessed - w/ 2" Collar
Capacity	800 Multi-Fold or or 600 C-Fold towels / 9.0 Gal. (34.0 L) Waste Capacity, standard

**INSTALLATION**

Mount unit in wall recess with #10 self-threading screws (by others) through concealed mounting holes provided. For compliance with ICC/ANSI A-117.1-2003 and 2010 ADA Accessibility Standards, install unit with centerline of towel dispenser slot 48" [1219] maximum Above Finish Floor (AFF). Note that top of rough wall opening (RWO) is 3/4" [19] below top of unit. For general utility install unit with centerline of towel dispenser slot between 49" [1245] and 56" [1422] AFF. SR collar is installed on cabinet prior to mounting in wall recess following procedure described on SR Collar Tech Data Sheet.

RWO required is 15-3/4" [400] W x 52-1/2" [1335] H x 4" [102] D minimum

**WARRANTY**

One (1) Year from date of Invoice