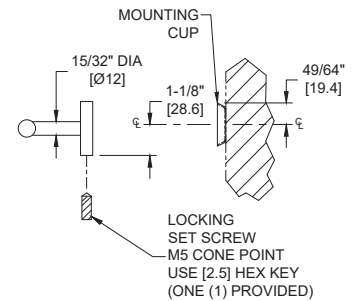
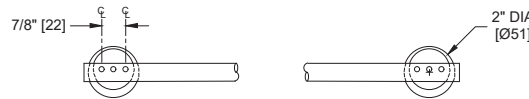
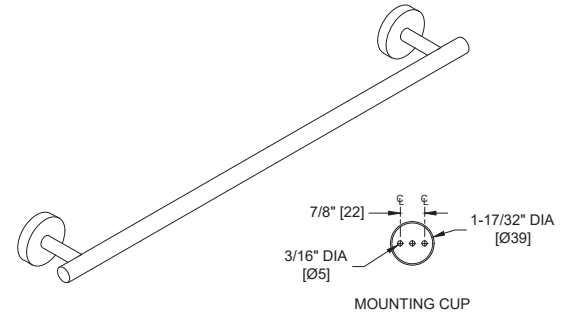
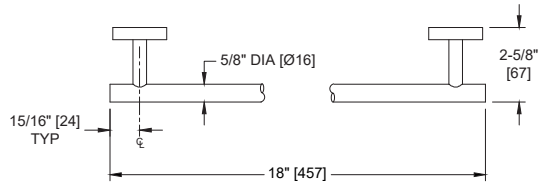


Round Towel Bar, 18"

Specialty Accessories

MasterFormat Section 10 28 13



Scan for
Information



SUSTAINABILITY/LEED

MR 4.1 (1) MR 6 (1) EQ 4.2 (1)
MR 4.2 (1) EQ 4.1 (1) EQ 4.4 (1)

NOTE:

ALL DIM'S INCH [MM]
ILLUSTRATION FOR REF ONLY AND NTS

PRODUCT OVERVIEW

Satin-finish stainless steel tube and posts with round mounting brackets on ends. Extends 2-5/8" [67] from wall. 18" [457] in length, 5/8" [16] diameter.

KEY FEATURES & SPECIFICATIONS

- Type 304 Stainless Steel - Satin Finish
- Surface Mounted
- 20 Gauge Towel Bar
- 22 Gauge Post
- 19 Gauge Mounting Cup
- 18" Length

OPERATION & MAINTENANCE
TECHNICAL INFORMATION / PRODUCT PROPERTIES

Property	Value
Dimensions	5/8" diameter x 18" [16 dia. x 457] x 2-5/8" [67] Projection
Construction	Type 304 Stainless Steel - Satin Finish
Mounting	Surface Mounted
Capacity	N/A

INSTALLATION

Surface mount unit to finished wall or on door with four (4) #6 x 1-1/2" [M4x39] pan head self-threading screws (provided) through holes provided in mounting cups into plastic wall anchors (provided) or other suitably prepared mountings (by others) or other suitable mounting hardware (by others) to suit wall conditions. Clip flanges onto mounting cups and tighten setscrews (provided) to lock them in place. For compliance with 2010 ADA Accessibility Standards install unit with top of towel rod 48" [1219] maximum Above Finished Floor (AFF) if clear floor reach is provided or 46" [1168] MAX AFF if side reach access over an obstruction (e.g. vanity) with reach depth greater than 10" [254] and less than 25" [635] is only provided or 44" [1118] max AFF if forward reach over an obstruction (e.g. commode) with reach depth greater than 20" [508] and less than 25" [635] is only provided. For general utility install towel rod with centerline of mounting cups at 55" [1397] AFF.

ADDITIONAL INFORMATION
WARRANTY

One (1) Year from date of Invoice