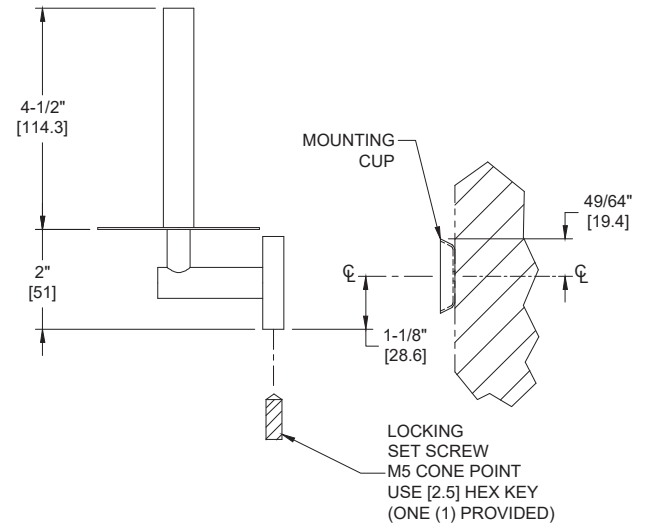
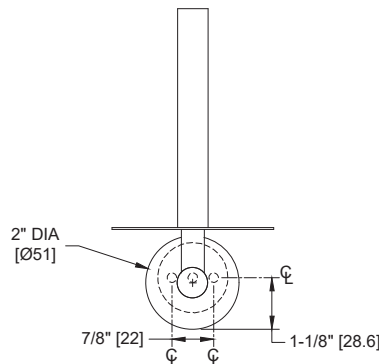
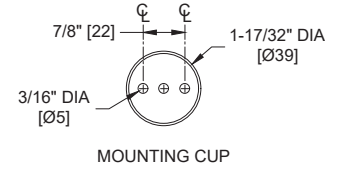
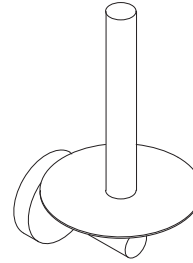
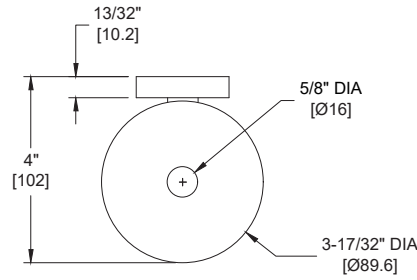


Toilet Tissue Spare Holder, Vertical

Toilet Tissue Dispensers

MasterFormat Section 10 28 13



Scan for Information



SUSTAINABILITY/LEED

MR 4.1 (1) MR 6 (1) EQ 4.2 (1)
MR 4.2 (1) EQ 4.1 (1) EQ 4.4 (1)

NOTE:
ALL DIM'S INCH [MM]
ILLUSTRATION FOR REF ONLY AND NTS

PRODUCT OVERVIEW

Holds one roll of toilet paper. Extends 4" [102] from wall. All exposed surfaces have a satin finish.

KEY FEATURES & SPECIFICATIONS

- Toilet Tissue Spare Holder, Vertical
- Type 304 Stainless Steel - Satin Finish
- Surface Mounted - Vertical
- Posts are solid bar and roll support plate shall be 16 gauge stainless steel
- 19 Gauge Mounting Cup

OPERATION & MAINTENANCE

One roll of toilet paper is placed over the post type holder for ready availability when dispenser roll is finished. Toilet paper is replenished on a cycle determined by maintenance needs.

TECHNICAL INFORMATION / PRODUCT PROPERTIES

Property	Value
Dimensions	3-1/2" W x 6-7/16" H x 4" D [90 x 163.5 x 102]
Construction	Type 304 Stainless Steel - Satin Finish
Mounting	Surface Mounted - Vertical
Capacity	Holds one (1) roll of standard core roll toilet paper up to 5" Dia. [Ø127]

INSTALLATION

Surface mount unit to finished wall with two (2) #6 x 1-1/2" [M4 x 39] pan head self-threading screws (provided) through holes provided in mounting cup into plastic wall anchors (provided) or other suitably prepared mountings (by others) or other suitable mounting hardware (by others) to suit wall conditions. Clip flange onto mounting cup and tighten setscrew (provided) to lock it in place. For compliance with ICC/ANSI A-117.1-2003 and 2010 ADA Accessibility Standards, install unit so that top of horizontal paper holder arm is between 19" [483] minimum above finished floor (MIN AFF) to 40" [1016] maximum AFF (Above Finished Floor) and centerline of roll is no farther than 33" [838] from back wall behind commode or between 7" [178] and 9" [229] from front of commode. Recommended mounting height for general utility is 32" [813] AFF to top of post.

OPTIONS
WARRANTY

One (1) Year from date of Invoice