

Toothbrush & Tumbler Holder – Surface Mounted, Bright Finish

Specialty Accessories

MasterFormat Section 10 28 13

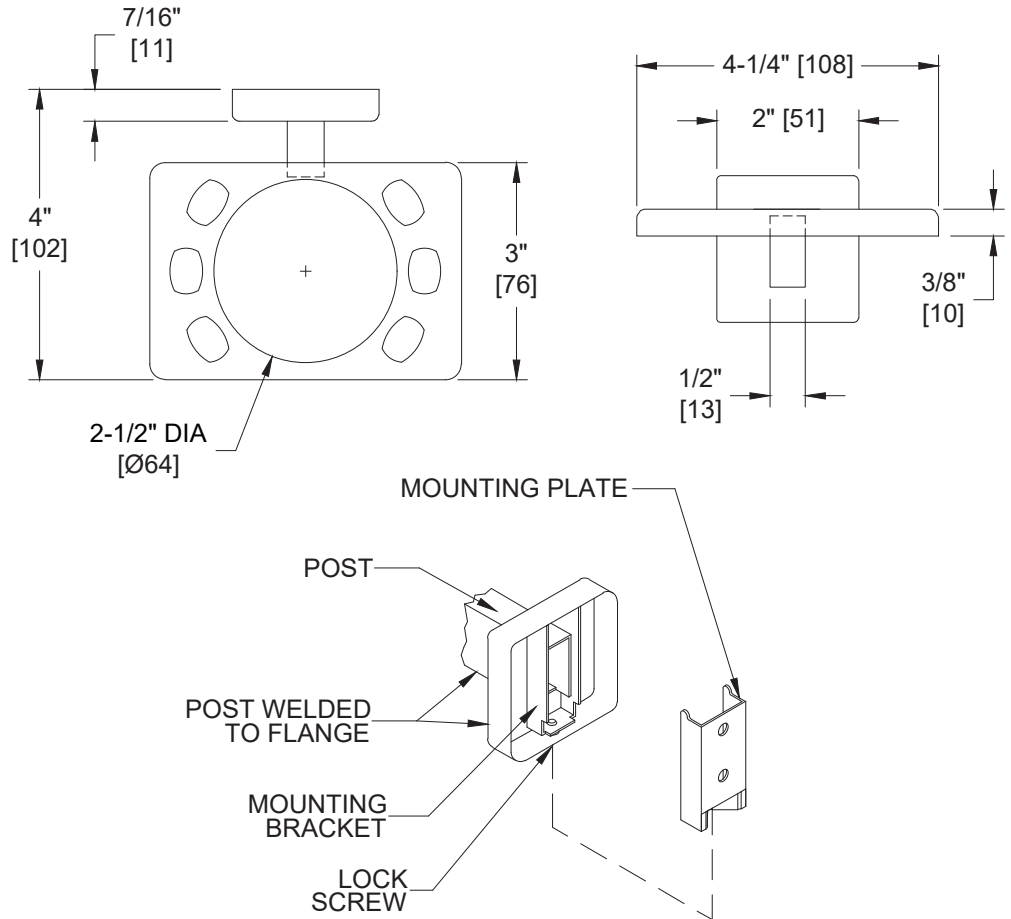


Scan for
Information



SUSTAINABILITY/LEED

MR 4.1 (1) MR 6 (1) EQ 4.2 (1)
MR 4.2 (1) EQ 4.1 (1) EQ 4.4 (1)



NOTE:
ALL DIM'S INCH [MM]
ILLUSTRATION FOR REF ONLY AND NTS

PRODUCT OVERVIEW

Tumbler hole will accommodate a standard tumbler that tapers to less than 2-1/4" diameter [57] at bottom, or a straight tumbler of 2-1/8" [54] diameter with a rim larger than 2-1/2" [64] diameter. Toothbrush holder accommodates up to six (6) toothbrushes. Bright-finish stainless steel. Model Option Notes: 7335-B – Bright Finish 7335-S – Satin Finish

KEY FEATURES & SPECIFICATIONS

- Type 304 Stainless Steel - Bright Finish
- Surface Mounted

OPERATION & MAINTENANCE

Tumbler hole will accommodate a standard tumbler that tapers to less than 2-1/4" [?57] diameter at bottom, or a straight tumbler of 2-1/8" [?54] diameter with a rim larger than 2-1/2" (64mm) diameter. Toothbrush holder accommodates up to six (6) toothbrushes.

TECHNICAL INFORMATION / PRODUCT PROPERTIES

Property	Value
Dimensions	4-1/4" [108] W x 2" [51] H x 4" [102] D
Construction	Type 304 Stainless Steel - Bright Finish
Mounting	Surface Mounted
Capacity	

INSTALLATION

Surface mount unit on wall using #10 self-threading screws (by others) through holes provided in mounting plates into suitable prepared mountings (by others) or other suitable mounting hardware (by others) to suit wall conditions. Hang post and flange assemblies on mounting plates and tighten setscrews to lock unit to plates. For compliance with ICC/ANSI A-117.1-2003 and 2010 ADA Accessibility Standards install unit with top of shelf 48" [1219] maximum Above Finished Floor (AFF) if clear floor forward reach or if clear floor side reach access only is provided or 46" [1168] max AFF if side reach access over an obstruction (e.g. vanity) with reach depth greater than 10" [254] and less than 25" [635] is only provided or 44" [1118] max AFF if forward reach over an obstruction (e.g. commode) with reach depth greater than 20" [508] and less than 25" [635] is only provided. For general utility install shelf with centerline of mounting plates at 68" [1727] AFF.

ADDITIONAL INFORMATION

N/A

WARRANTY

One (1) Year from date of Invoice