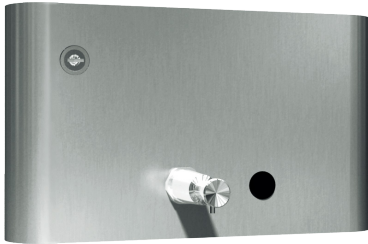


Profile Collection Liquid Soap Dispenser – Recessed

Soap Dispensers

Profile

MasterFormat Section 10 28 13



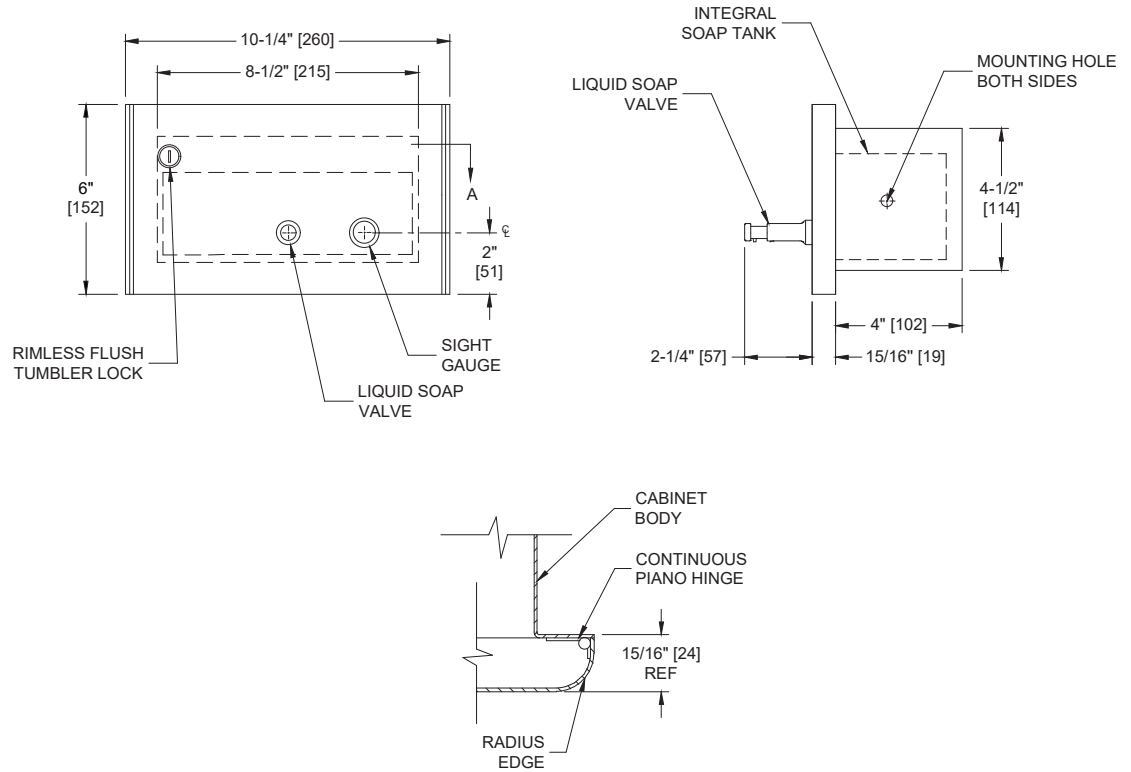
Scan for
Information



SUSTAINABILITY/LEED

MR 4.1 (1) MR 6 (1) EQ 4.2 (1)

MR 4.2 (1) EQ 4.1 (1) EQ 4.4 (1)



NOTE:
ALL DIM'S INCH [MM]
ILLUSTRATION FOR REF ONLY AND NTS
SEE SOAP DISPENSER CARE & MAINTENANCE
DOCUMENT ONLINE FOR CLEANING

PRODUCT OVERVIEW

Dispenser has a covered stainless steel soap tank attached to the door, which hinges out for easy filling and cleaning. Its all-purpose valve dispenses liquid, lotion and detergent-type soaps, with a capacity of 52 fl. oz. (1.5 L). Soap Requirements: Proper usage of this dispenser requires, that only soap within the following range for viscosity and pH may be used. Viscosity Range (mPa·s or cP): 100 – 3500. pH Range: 5.5 ~ 8.0. Soaps containing reportable salts, chlorides and alcohols should be avoided.

KEY FEATURES & SPECIFICATIONS

- Robust 16 Gauge Stainless Steel face
- Curved (radius) edges add elegance
- Type 304 Stainless Steel - Satin Finish
- Recessed
- 3/16" CONCEALED piano hinge adds durability
- Dispenses liquid, lotion and detergent-type soaps - capacity 52 fl. oz. (1.5 L)

OPERATION & MAINTENANCE

Soap is manually dispensed by pushing valve button until supply is depleted. Unit may be reloaded easily by swinging out door/tank assembly with a partial load in-place and will continue to feed properly. Tank supply is replenished manually on cycle determined by maintenance needs.

TECHNICAL INFORMATION / PRODUCT PROPERTIES

Property	Value
Dimensions	10-1/4" x 6" x 6-5/8" [260 x 152 x 168]
Construction	Type 304 Stainless Steel - Satin Finish with concealed multi-staked piano hinge - 3/16" diameter
Mounting	Recessed
Options	N/A

INSTALLATION

Unit is mounted in wall recess using two (2) #10 self-threading screws (by others) through concealed mounting holes provided. For compliance with ADA Accessibility Guidelines, unit should be installed so that dispenser valve is 54" [1372] maximum Above Finished Floor (AFF) if clear floor side reach access is provided or 48" [1219] maximum AFF if clear floor forward reach access is provided or 46" [1168] max. AFF side reach over an obstruction (i.e. vanity) is only provided. Note that top of RWO is 9/16" [14] below top of unit. For general utility install unit so that dispenser valve is 6" to 10" [152 to 254] above top of vanity.

Rough Wall Opening (RWO) required is 9" W x 4-7/8" H x 4-1/4" D minimum [229 x 124 x 108]

WARRANTY

One (1) Year from date of Invoice