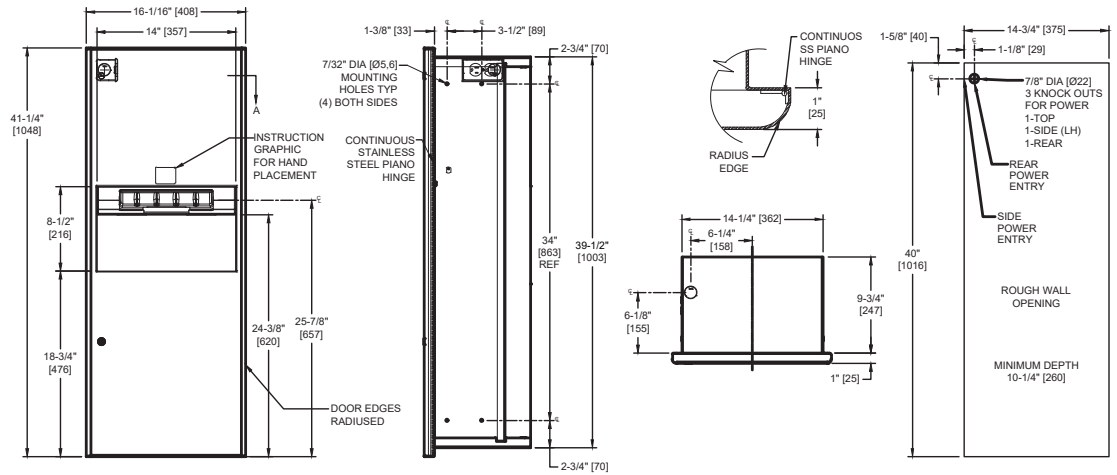


**Profile™ Collection Automatic Roll Towel Dispenser & Waste Receptacle - Battery Operated – Recessed**

Paper Towel Combination Units

Profile

MasterFormat Section 10 28 13



Scan for Information



**SUSTAINABILITY/LEED**

MR 4.1 (1) MR 6 (1) EQ 4.2 (1)  
MR 4.2 (1) EQ 4.1 (1) EQ 4.4 (1)

**NOTE:**  
ALL DIM'S INCH [MM]  
ILLUSTRATION FOR REF ONLY AND NTS  
FOR CLEANING INSTRUCTIONS SEE APPROPRIATE SECTIONS IN  
PRODUCT CARE & MAINTENANCE BULLETIN (PCM) ON ASI WEBSITE

**PRODUCT OVERVIEW**

Proximity sensing no-touch unit dispenses a pre-set length per cycle from 8" [205] or 9" [230] wide, 800 ft. (244 m) long rolls. 10 gal. (37.8 L) stainless steel waste receptacle. Powered by 4 D-size batteries (not included).

**KEY FEATURES & SPECIFICATIONS**

- Robust 16 Gauge Stainless Steel face
- Curved (radius) edges add elegance
- Cabinet & Frame made of 20 gauge Type 304 Stainless Steel - Satin Finish
- Door shall be attached to the edge of unit with a concealed full length 3/16" Dia. [Ø4,8] heavy duty stainless steel multi-staked piano hinge and shall be held closed with two (2) flush rimless tumbler locks keyed
- Recessed
- Automatic - Battery Operated - "No Touch"
- RollTowels - up to 800 ft. [244M] Length / 10 Gal. (38 L) Waste Capacity

**OPERATION & MAINTENANCE**

Towels are dispensed one length at a time automatically when hands are placed in sensor zone until supply is depleted. Owner predetermines length of towel dispensed by making selections on three (3) three-position switches for length, delay, and economy. Unit may be reloaded with a full roll to automatically start when finished with an existing partial roll and will continue to feed properly when reloaded with a full roll and partial roll is transferred to stub roll position. Refill dispenser by unlocking door and replacing towel roll for an empty or partially empty unit. Dispenser supply is replenished, batteries are replaced and waste receptacle is emptied manually on cycles determined by maintenance needs. LED indicates sensing and battery condition. Locking door prevents unauthorized access and roll removal.

**TECHNICAL INFORMATION / PRODUCT PROPERTIES**

Property	Value
Dimensions	16-1/16" [408] W x 41-1/4" [1048] H x 10-11/16" [272] D
Construction	Type 304 Stainless Steel - Satin Finish
Power	Batteries: Four (4) D-size
Operation	Automatic "No-Touch"
Mounting	Recessed
Capacity	Roll Towels - up to 800 ft. Length / 10.5 Gal. (37.8 L) Waste Capacity

**INSTALLATION**

Install unit in wall with four (4) #10 self-threading screws (supplied by others) through concealed mounting holes provided. Note that top of Rough Wall Opening (RWO) is 3/4" [19] below top of unit. For compliance with ICC/ANSI A-117.1-2003 and 2010 ADA Accessibility Standards, install unit so that top edge of towel dispenser opening is 48" [1219] maximum Above Finished Floor (AFF) only if clear floor reach access is provided. Be advised that local codes may require mounting so that top of towel dispenser opening is 40" [1016] max AFF (e.g. California UBC/Title 24). For general utility install unit with centerline of towel dispenser opening between 49" and 56" [1245 to 1422] AFF.

RWO required is 14-3/4" [375] W x 40" [1016] H x 10-1/4" [260] D

**WARRANTY**

One (1) Year from date of Invoice