



**AMERICAN SPECIALTIES, INC.**

441 Saw Mill River Road, Yonkers, NY 10701  
(914) 476.9000 • (914) 476.0688  
www.americanspecialties.com

**MODEL No:**

**FS-0700**

**ISSUED:**

**29 SEP 2020**

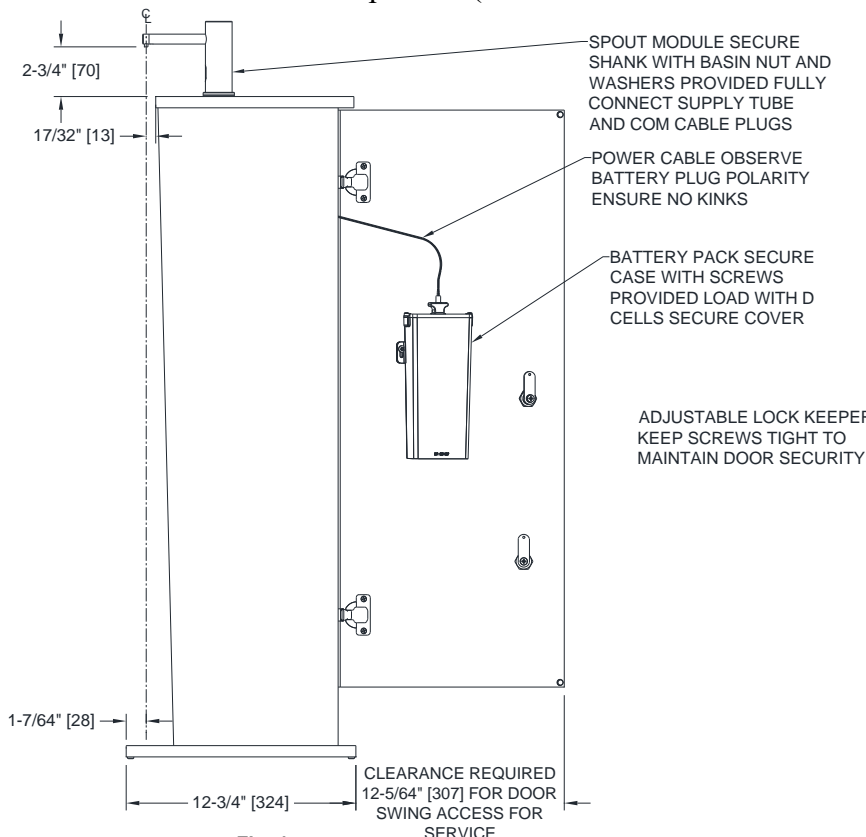
**REVISED:**

**7 OCT 2020**

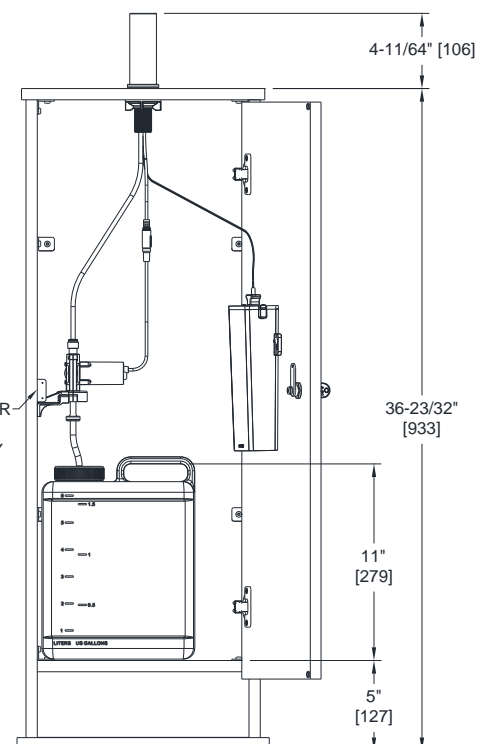
## **FREESTANDING PLASTIC LAMINATE SANITIZING STATION INSTALLATION GUIDE (Pg 1 of 2)**

### **INSTALLATION**

1. Install spout and sensor housing with escutcheon flange, rubber washers and basin nut (supplied) through 1" Dia [Ø25] mounting hole (provided) on stand top. See OM&IG for Model No 0390-HSD, provided in box with dispenser
2. Install motor-pump module onto inside wall of stand at predrilled holes provided using two (2) № 8-32 x 1/2" self-threading Phillips FH stainless steel screws (provided) through holes provided in mounting bracket. Connect flex tubing (provided installed) from dispenser shank to fitting on top of pump/control housing with firm press-in until hard stop.
3. Connect spout Com-cable plug into control unit inline cable connector.  
**Note:** Com plug should be inserted fully so that the white **O**-ring is not visible and a clicking sound is heard. If Com plug is not connected properly, the motor will run continuously.
4. Connect clear supply flex tubing (provided attached to fitting on pump/control housing) to the 1.6 Gal [6 L] tank (supplied) through the port in the cap so that tube end is just above bottom of tank. (see Figs. 2 and 2.a)
5. Install battery box (if so provided) on inside face of access door at predrilled screw holes with two (2) № 8 x 5/8" Type AB Phillips pan head stainless steel screws (provided). Load six (6) 'D'-size 1.5V cells (by others) in battery carrier tray by removing two (2) Phillips screws and placing batteries according to polarity indication. Re-install battery carrier tray and re-tighten the screws, plug battery cable jack into battery box socket in cover handle and screw lock cover. Alternatively, plug AC Adapter (Model No 0390-ACA, if so provided) into GFCI power outlet (by others) located within reach range of secured cable (straight length is 13.5 ft [4115] and will be reduced by securing wraps and allowable slack) on tank handle and plug connector into mating inline power connector. (see Fig's. 1 and 3)
6. Remove the protective sticker covering the sensor.
7. Fill tank with correct sanitizer product (see 0390-HSD TDS and OM&IG) and prime system.



**Fig. 1**



**Fig. 2**



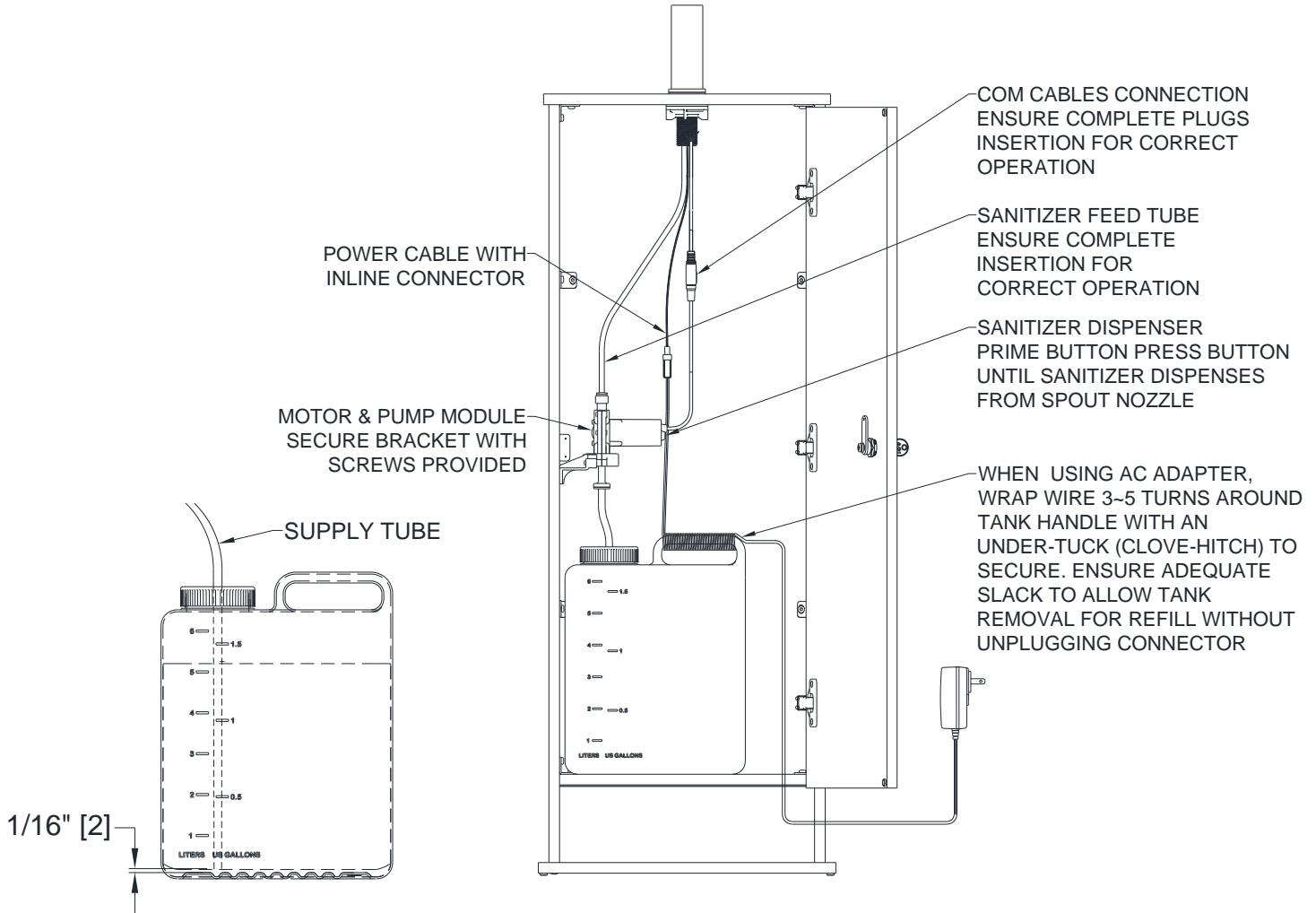
**AMERICAN SPECIALTIES, INC.**  
441 Saw Mill River Road, Yonkers, NY 10701  
(914) 476.9000 • (914) 476.0688  
www.americanspecialties.com

**MODEL №:** FS-0700

**ISSUED:** 29 SEP 2020

**REVISED:** 7 OCT 2020

## FREESTANDING PLASTIC LAMINATE SANITIZING STATION INSTALLATION GUIDE (Pg 2 of 2)



**Fig. 2.a**

**Fig. 3**

### MAINTENANCE

Care and cleaning of chrome and special finishes- see also PCM document.

DO NOT use steel wool or cleansing agents containing acids, bleach, chlorine, ammonia, abrasives, or the like. Use of any cleaning or maintenance products containing these substances may damage the surface of the dispenser. For surface cleaning use ONLY soap and water, then wipe dry with a clean cloth or towel. When cleaning adjacent installation surfaces, protect the soap dispenser from any splattering of harsh cleansers.

Replacement Hardware :

- Feet/Door Bumpers: 65-21740
- Hinge: 10-75T1550
- Hinge Spacer: 10-70T3507
- Hinge Mounting Plate: 65-1001-1012



**AMERICAN SPECIALTIES, INC.**  
441 Saw Mill River Road, Yonkers, NY 10701  
(914) 476.9000 • (914) 476.0688  
www.americanspecialties.com

**MODEL №:** 0390-HSD

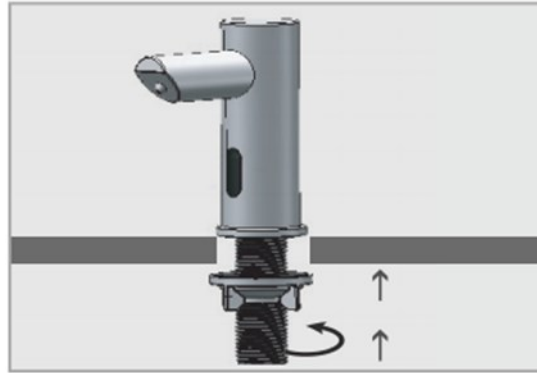
**ISSUED:** 30 SEP 2020

**REVISED:** 7 OCT 2020

**PODIUM MOUNTED AUTOMATIC GEL HAND SANITIZER DISPENSER (HSD) INSTALLATION GUIDE (Pg 1 of 4)**

**INSTALLATION**

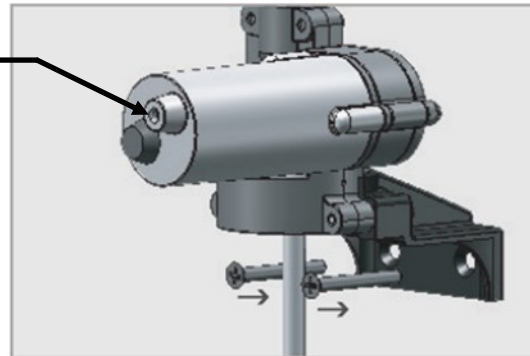
1. Install spout and sensor housing with escutcheon flange, rubber washers and basin nut (supplied) through 1" Dia. [Ø25] mounting hole. (see Fig. 1)



**Fig. 1**

2. Fix the pump to the desired location by securing the bracket with two (2) № 8-32 x 1/2" self-threading Phillips FH stainless steel screws (provided) or hardware to suit site conditions.

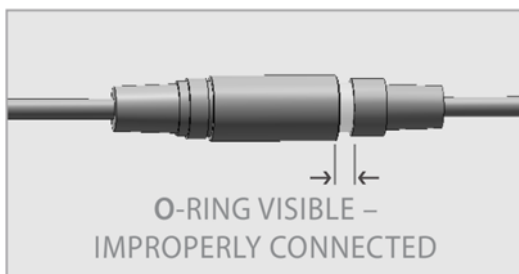
COM CABLE NOT SHOWN FOR CLARITY



**Fig. 2**

3. Connect flex tubing from dispenser shank to fitting on top of pump/control housing. Ensure square cut if shortening tube from supplied length and completely insert into connector until hard stop with firm push
4. Connect spout Com-cable plug into control unit inline cable connector.

**Note:** Com plug should be inserted fully so that the white **O**-ring is not visible and a clicking sound is heard. If Com plug is not connected properly, the motor will run continuously. (see Fig. 3)



**Fig. 3**



**AMERICAN SPECIALTIES, INC.**  
441 Saw Mill River Road, Yonkers, NY 10701  
(914) 476.9000 • (914) 476.0688  
www.americanspecialties.com

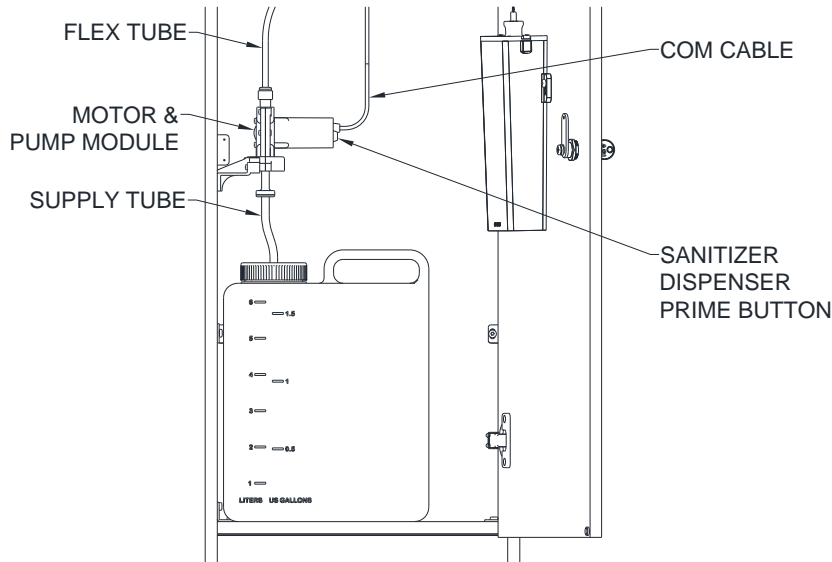
**MODEL №:** 0390-HSD

**ISSUED:** 30 SEP 2020

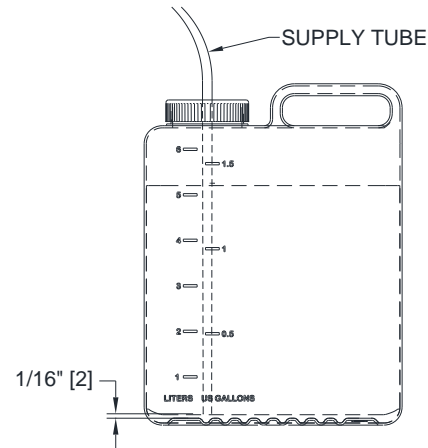
**REVISED:** 7 OCT 2020

**PODIUM MOUNTED AUTOMATIC GEL HAND SANITIZER DISPENSER (HSD) INSTALLATION GUIDE (Pg 2 of 4)**

4. Connect clear supply flex tubing (provided attached to fitting on pump/control housing) to the 6L tank (supplied) through the port in the cap so that tube end is just above bottom of tank. (see Figs. 4 and 4.a)

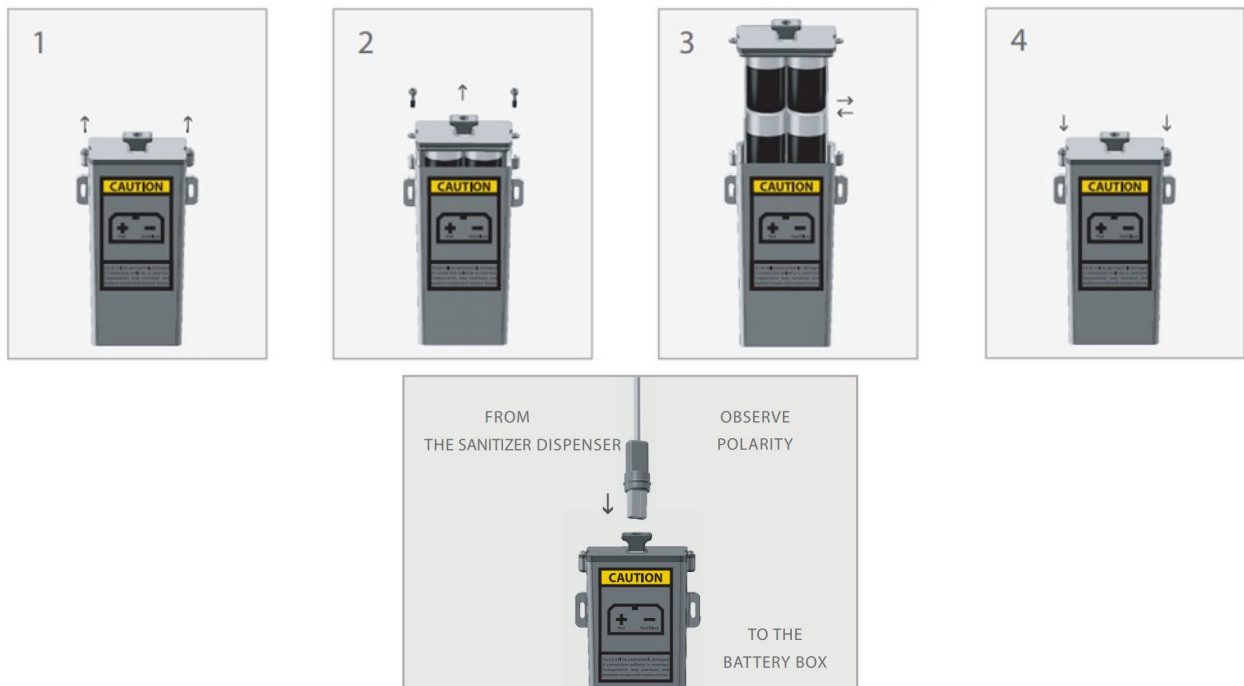


**Fig. 4**



**Fig. 4.a**

5. Install battery box (if so provided) on inside face of access door at predrilled screw holes with two (2) № 8 x 5/8" Type AB Phillips pan head stainless steel screws (provided). Load six (6) 'D'-size 1.5V cells (by others) in battery carrier tray by removing two (2) Phillips screws and placing batteries according to polarity indication. Re-install battery carrier tray and re-tighten the screws, plug battery cable jack into battery box socket in cover handle and screw lock cover. Alternatively, plug AC Adapter (Model No 0390-ACA, if so provided) into GFCI power outlet (by others) located within reach range of secured cable (straight length is 13.5 ft [4115] and will be reduced by securing wraps and allowable slack) on tank handle (or other securing means, by others) and plug connector into mating inline power connector. (see Fig. 5)



**Fig. 5**



**AMERICAN SPECIALTIES, INC.**  
441 Saw Mill River Road, Yonkers, NY 10701  
(914) 476.9000 • (914) 476.0688  
www.americanspecialties.com

**MODEL №: 0390-HSD**

**ISSUED: 30 SEP 2020**

**REVISED: 7 OCT 2020**

**PODIUM MOUNTED AUTOMATIC GEL HAND SANITIZER DISPENSER (HSD) INSTALLATION GUIDE (Pg 3 of 4)**

6. Remove the protective sticker covering the sensor. (see Fig. 6)



**Fig. 6**

7. Fill the 1.6 Gal [6 L] tank with Gel Sanitizer in a viscosity range of 3.5k – 6.5k cP (mPa•s) and a pH in range of 7 ± 1.5.
8. Push-button on pump motor runs pump continuously to prime Gel in tubes until Sanitizer is dispensed from the spout.

**OPERATION**

System shall operate each time an object is positioned within the sensing range of 1-3/16" to 3-15/16" ± 3/8" (30 to 100 ± 10) directly in front of the spout of the dispenser. A stream of appropriate viscosity nonabrasive Gel Sanitizer drops with total dispense amount of 0.03 oz (0.8 ml) will be pumped from the nozzle during each activation. LED will display blue flash for sensing and continuous flashing for low battery condition.

**BATTERY MODE ONLY:**

When the batteries weaken, the red indicator light will blink at a constant rate when the user's hands are within the sensor range. The batteries should be replaced within two weeks.

To replace the batteries (same as Step 5. above):

1. Carefully open the battery box, use Phillips drive #2 to remove cover screws.
2. Remove the old batteries from carrier tray.
3. Replace the used batteries with new 'D' batteries in same polarity.
4. Close the box and re-tighten the screws and reconnect battery cable.

**NOTE:** Do not mix used batteries with new ones

**MAINTENANCE**

Care and cleaning of chrome and special finishes- see also PCM document.

DO NOT use steel wool or cleansing agents containing acids, bleach, chlorine, ammonia, abrasives, or the like. Use of any cleaning or maintenance products containing these substances may damage the surface of the dispenser. For surface cleaning use ONLY soap and water, then wipe dry with a clean cloth or towel.



**AMERICAN SPECIALTIES, INC.**  
441 Saw Mill River Road, Yonkers, NY 10701  
(914) 476.9000 • (914) 476.0688  
www.americanspecialties.com

**MODEL №:** 0390-HSD

**ISSUED:** 30 SEP 2020

**REVISED:** 7 OCT 2020

**PODIUM MOUNTED AUTOMATIC GEL HAND SANITIZER DISPENSER (HSD) INSTALLATION GUIDE (Pg 4 of 4)**

| PROBLEM                                       | INDICATOR  | CAUSE   | SOLUTION   |
|---|--|---|--|
| Supply quantity diminished                    | Low volume dispense  | Voltage of batteries is low   | Replace batteries  |
| No supply coming out of the spout             | Red light in the sensor flashes continuously when the user's hands are within the sensor range | Voltage of batteries likely below 1.47V per cell  | Replace batteries  |
|   | No supply dispensed  | Supply level is below supply tube.  | Refill supply tank   |
|   |  | The tank has been filled but supply has not reached the spout.  | Press the refill button on the pump until supply starts to come out of the spout again, or press remote "Fill" button. |
|   |  | The connector between the motor and the dispenser head is not properly engaged.   | Connect the Com Cable plug and socket properly so that the white O-ring is not visible.                                |
|   | Red light in the sensor does not flash (once) when user's hands are within the sensor range    | Sensor is picking up reflections from another object  | Eliminate cause of reflection  |
|   |  | Connectors between the dispenser head and the pump assembly and/or the power supply are disconnected or not properly connected. | Connect the plugs and sockets correctly.   |
|   |  | Batteries are completely depleted.  | Replace batteries  |
| Supply dispensing from the spout continuously | Red light flashes (once) and the motor operates.   | Supply solidification at the supply tube.   | Fill the tank with warm water at 120~140°F (49-60°C) and run the pump constantly until supply is dispensed             |
|   | Steady stream of droplets is dispensing.   | The Com Cable between the pump assembly and soap dispenser is not connected properly.   | Connect the Com Cable plug and socket properly so that the white O-ring is not visible.                                |