



AMERICAN SPECIALTIES, INC.

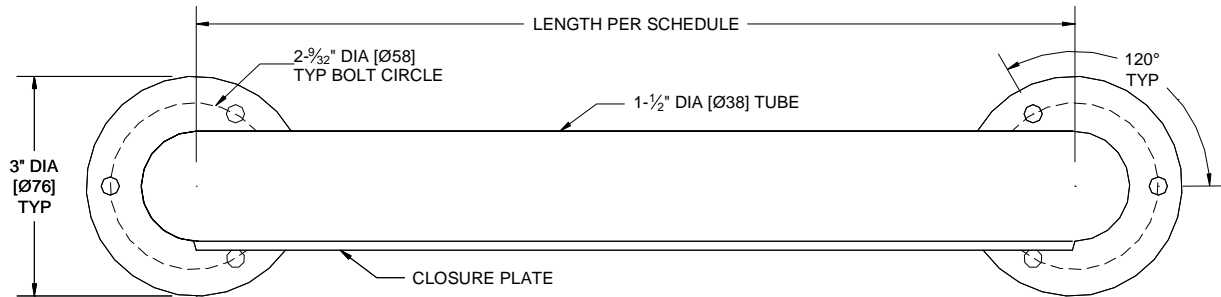
441 Saw Mill River Road, Yonkers, NY 10701 (914) 476-9000
www.americanspecialties.com

MODEL No: 160/161/163
166/168/158

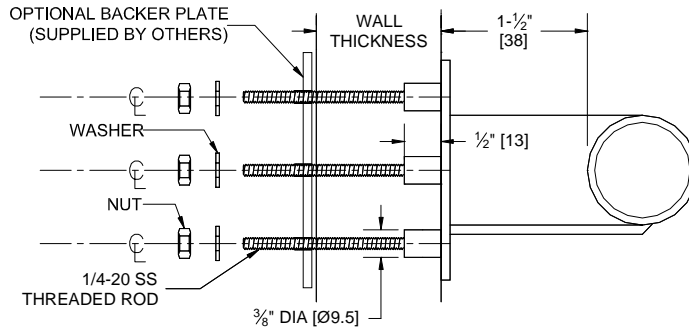
ISSUED: 02-87

REVISED: 06-09

SECURITY GRAB BAR (REAR MOUNTED)



NOTE: ALL DIMS INCH [MM]



SCHEDULE OF AVAILABILITY

Model N°	Length	Model N°	Length	Model N°	Length
160	24" (610)	163	36" (914)	168	48" (1219)
161	30" (762)	166	42" (1067)	158	18" (457)

W= WALL THICKNESS MUST BE SPECIFIED TO SELECT CORRECT LENGTH THREADED RODS SPECIFICATION

Security Grab Bar (Rear Mounted) shall be fabricated of alloy 18-8 stainless steel, type 304. All exposed surfaces shall have satin finish. Flanges shall be 1/8" (3) thick and shall be completely welded to tube end. Tubing shall be 1-1/2" diameter (Ø38.1) with 18 gauge (0.048" (1.2) thick) wall. Each flange shall have three (3) welded-on 1/4-20-UNC-2B internally threaded studs with threaded rod length specified at time of order to suit wall thickness and shall be provided with three (3) each washers and nuts for mounting. Closure plate welded on bottom shall be 12 gauge (0.105" (2.7) thick) stainless steel type 304 alloy 18-8 and shall fit closely to flanges and a straight line between rear face mounting surface of flanges.

Security Grab Bar (Rear Mounted) shall be Model N° 158/160/161/163/166/168-_____ of American Specialties Inc., 441 Saw Mill River Road, Yonkers, New York 10701-4913

INSTALLATION

For compliance with ADA Accessibility Guidelines, install unit so that top of the grab bar is 33" (840) minimum above finished floor (AFF) to 36" (915) maximum AFF. Surface mount unit to finished wall through six (6) pre-drilled openings (by others) and secure unit to wall with washers and nuts (supplied) or other continuous anchor/backer material (by others) to suit local codes and wall conditions. The length of the threaded rods is determined by the thickness of the wall on which the unit is mounted. Specify the thickness of the wall in the charted increments below (e.g. 163-68).

STRENGTH

ASI grab bars are designed to meet and exceed ADAAG requirements as published in ICC/ANSI A117.1-2003 and CFR 28 Part 36, revised as of 1 July 1994, that fabricated product shall be of adequate strength to support a load of 250 pounds (113.4 kg). Mounting to the wall is a critical part of the system to meet this requirement. To withstand the shear, tension or pullout and torsion loads generated by the maximum loading, the fastener system must be adequately sized. The product is capable of holding in excess of 1350 lbs (612.4 kg) when properly installed.

Threaded Rod Length Selection Determined By Wall Thickness

Wall Thickness	Suffix	Wall Thickness	Suffix	Wall Thickness	Suffix
Less than 6" (152)	LT6	6" to 8" (152 to 203)	68	Over 8" (203), Specify Thickness:___	GT8=XXX

Accessory Specialties

AMERICAN DISPENSER

Desert Ray Products

WATROUS INC.



AMERICAN SPECIALTIES, INC.

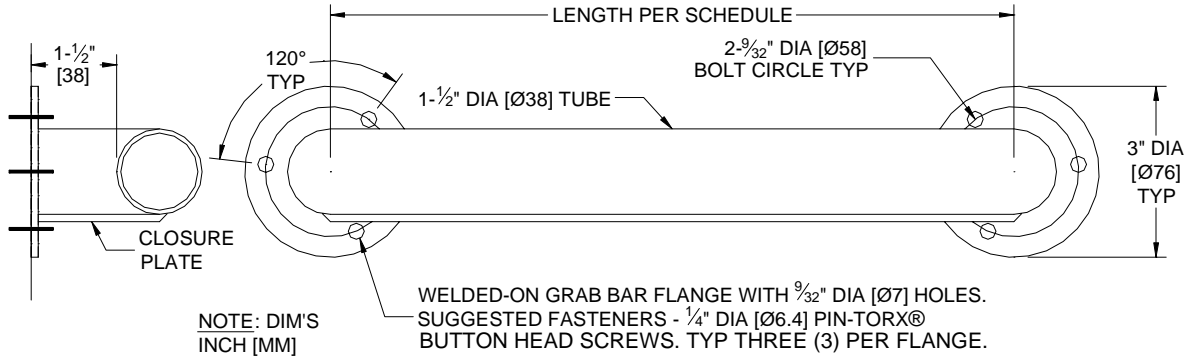
441 Saw Mill River Road, Yonkers, NY 10701 (914) 476-9000
www.americanspecialties.com

MODEL No: 162/164/165
167/169/159

ISSUED: 02-87

REVISED: 06-09

SECURITY GRAB BAR



Schedule of Availability			
Model No	Length	Model No	Length
162	30" (762)	167	42" (1067)
164	36" (914)	169	48" (1219)
165	24" (610)	159	18" (457)

SPECIFICATION

Security Grab Bar shall be fabricated of alloy 18-8 stainless steel, type 304. All exposed surfaces shall have satin finish. Tubing shall be 1-1/2" diameter (Ø38.1) with 18 gauge (0.048" (1.2) thick) wall. Flanges shall be 1/8" (3) thick and shall be completely welded to tube end. Each flange shall have three (3) mounting holes to accommodate 1/4" diameter (Ø6.4) screws (supplied by others). Closure plate welded on bottom shall be 12 gauge (0.105" (2.7) thick) stainless steel type 304 alloy 18-8 and shall fit closely to flanges and a straight line between rear face mounting surface of flanges.

Security Grab Bar shall be Model No 159/162/164/165/167/169 of American Specialties Inc., 441 Saw Mill River Road, Yonkers, New York 10701-4913

INSTALLATION

For compliance with ADA Accessibility Guidelines, install unit so that the top of the grab bar is 33" (840) minimum above finished floor (AFF) to 36" (915) maximum AFF. Surface mount unit to finished wall with six (6) 1/4-20 pin Torx® button head machine screws (suggested) of adequate length to ensure proper retention (by others) into wall anchors (by others) or into other suitable prepared mountings (by others) or with other suitable mounting hardware (by others) to suit wall conditions.

STRENGTH

ASI grab bars are designed to meet and exceed ADAAG requirements as published in ICC/ANSI A117.1-2003 and CFR 28 Part 36, Federal Register Vol. 56 No 144, 26 July 1991, that fabricated product shall be of adequate strength to support a load of 250 pounds (113.4 kg). Mounting to the wall is a critical part of the system to meet this requirement. To withstand the shear, tension or pullout and torsion loads generated by the maximum loading, the fastener system must be adequately sized. The product is capable of holding in excess of 1350 lbs (612.4 kg) when properly installed.

Accessory Specialties

AMERICAN DISPENSER

Desert Ray Products

WATROUS INC.